

Tree of Light Circle Conversations

“What’s Next For Humanity”

Thank you for joining us.
Our Conversation will begin shortly.



Chapter VII

Doorway to a Higher Realm



As the burning ground does its work and the dross of the personality turns to ash, it is replaced in the life of the disciple by an expanding field of wisdom distilled from experience. The progressively refined personality is becoming a worthy instrument for the Self that has engineered the journey to this point of deliverance. What began as a dim spark in the mists of time, advancing through countless cycles of evolution, is evolving into a steady flame that can light the way for others.





This is the moment when the soul is recognized as an embodiment of Christ consciousness. Thus far, at every step of the journey, the observing soul registers incremental signs of the transformation of consciousness: the opening of the heart to enfold more of life in its embrace, an increasing willingness to sacrifice personal desires and ambitions for a higher good, a realization of growing proximity to the realm of spirit. There comes a time when this progress is externalized—the radiance of the soul, the higher Self, becomes observable in the world.

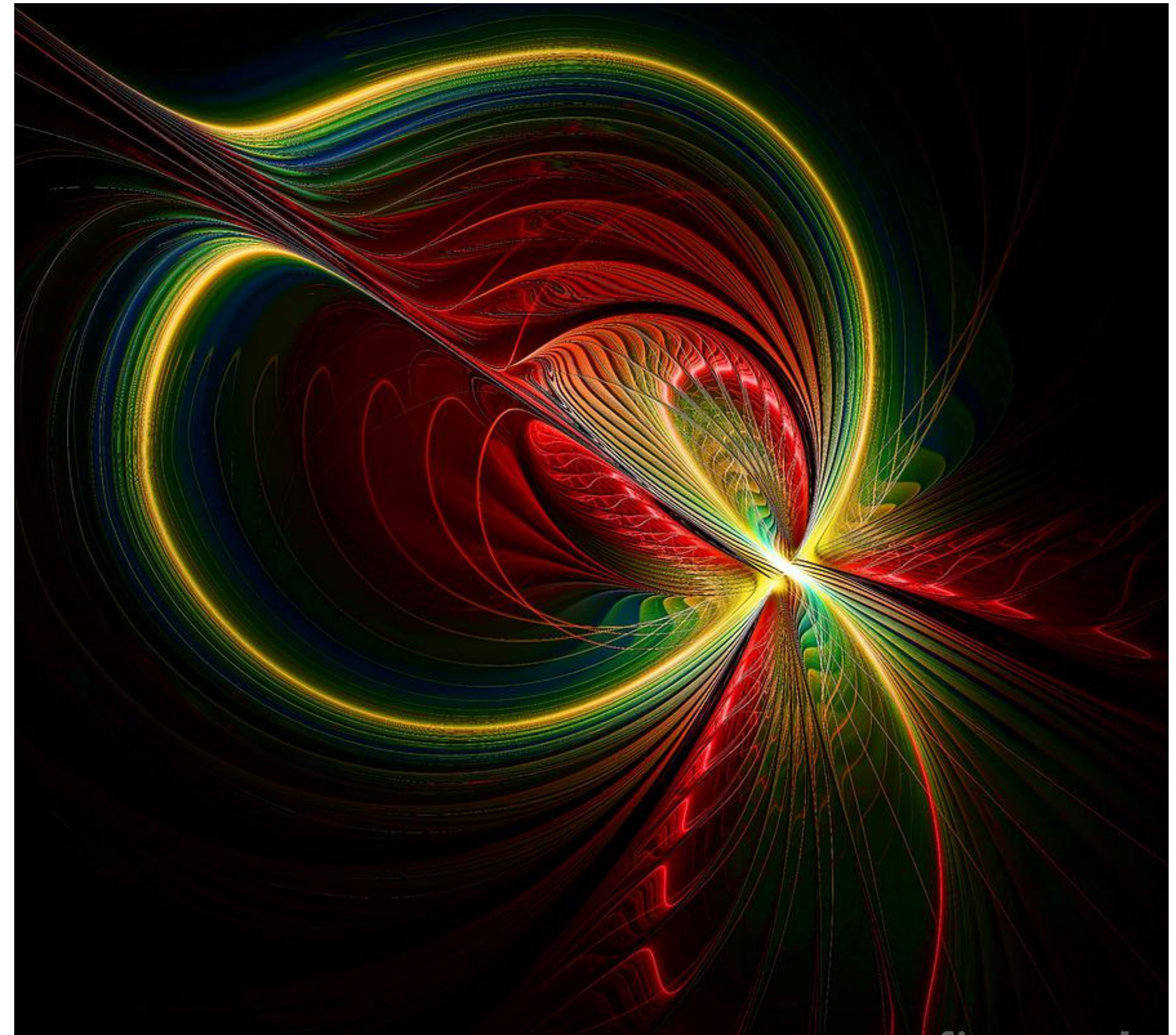
The Master Jesus in Palestine radiated a quality of spiritual love and wisdom that was unmistakably of divine origin, along with the supernatural capacity to heal and restore the well-being of those who approached him, plus the courage to stand in Truth like a pillar of fire. As the soul infuses its outer vehicle and bursts forth in its own light, reflections of these qualities begin to emerge. Undeviating expressions of wisdom and love, recognizable by others, mark the disciple who is becoming initiated into the spiritual Hierarchy.





Such individuals have demonstrably built the inner bridge of consciousness from the human realm to the spiritual, with assistance from elders in the higher realm. The so-called 'bridge of light' is a living stream of electric energy that flows from one party to another, creating an invisible line of communication. To establish the flow between these different levels of consciousness requires adjustments on both sides of the bridge. The less evolved being must be able to raise the vibrational frequency of their etheric body of light and the more evolved being must temporarily lower their vibrational frequency to find a stable meeting ground.

The term ‘vibrational frequency’ has become part of the vocabulary of contemporary seekers, along with the word ‘resonance.’ The common usage of these words reflects an embryonic awareness of subtle dimensions of life. Yet, the relationship between consciousness and vibrational frequency remains a mystery. The term ‘frequency’ derives from the realm of physical science, where electricity is measured by the amps it displays—the quantities of energy that pass through an electric current. In physical science, it is assumed that electric energy flows from a physical source. In spiritual science, it is understood that the source is of divine origin.

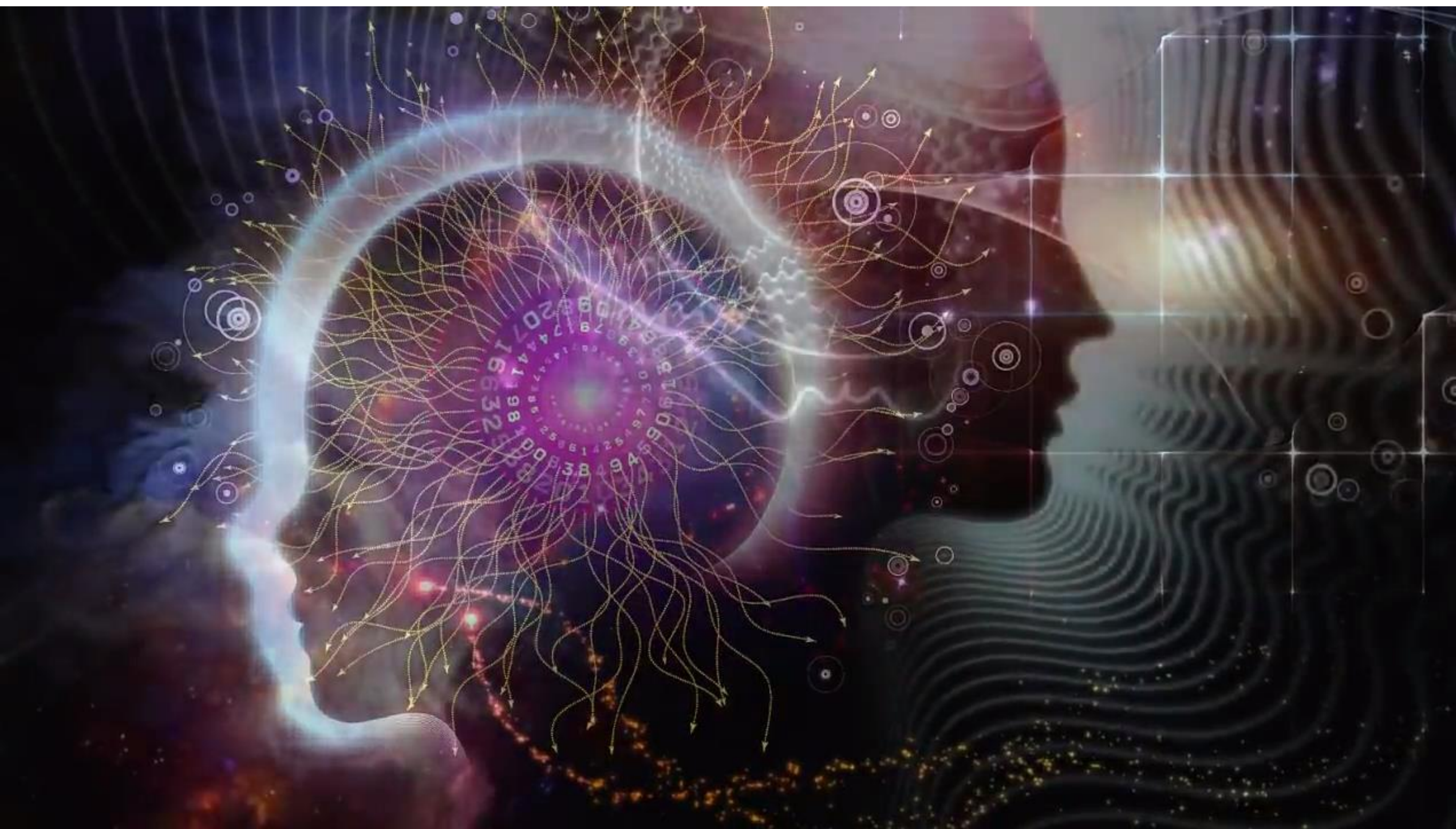




The nature of a current or a stream is movement and flow; energy flows from one point to another. In the case of electricity, the current can be regulated by raising or lowering the voltage or power from one velocity to another. When electricity takes the form of sound, it releases vibrations that are audible. The range of sound vibrations can be heard across a broad spectrum from the softest to the loudest notes. The sensitive music listener can actually *feel* the difference in sound vibrating in the tissues of the physical body, with low and high notes stirring different sensations.

So it is with spiritual light. As the aspirant becomes a consecrated disciple, a door opens to the next kingdom of Earth's life where the Masters of Wisdom dwell. What opens the door is the quality of light emanated by the disciple. The soul's light attracts the attention of an illumined being within the spiritual Hierarchy, when the brightness of that light indicates the disciple's ability to remain upon the narrow, razor-edged path regardless of the severity of the inevitable tests and trials. Such a human being becomes a candidate for entering the higher kingdom and no effort is spared to bring this about.





The principle means of interaction between members of the spiritual and human realms is telepathy. The sender of telepathic impressions, dwelling in an invisible realm, must develop the means of communicating with a person living in the material, physical world. This is where the work of achieving resonance begins. The sender, within the Hierarchy of Light, will aid the recipient to walk the path to the point where resonant vibrational frequencies will enable the recipient to correctly hear the messages being sent.

It can take many lifetimes for a human being to achieve this degree of resonance. The aspirant, the one who aspires to discover higher truth, is cast into a world of unfamiliar concepts and practices geared to invisible realities, whose application requires diligence and discipline. The disciple, the one who consciously decides to commit his or her life to the Path of Return, engages in a process that continues until the moment when the glow of the soul's light is bright enough to attract a teacher and guide from the higher realms.





We might liken this process to what occurs in the life of a child who shows unusual promise as a musician. At first, such a child will likely take music lessons from someone in the local neighborhood. As the student advances and the level of potential is revealed, parents or guardians may look for a teacher of higher caliber who lives further away. The student who aspires to become a professional musician and makes a commitment to that goal will willingly adhere to the requisite disciplines. As the musical capacity increases, a teacher is found who can help burnish the talent to a level of mastery and readiness to appear on a concert stage.

What's Next For Humanity?

A Tree of Light Circle Conversations

8/9 JUNE— 8 pm GMT

4 pm New York ~ 9 pm London/10 pm Rome ~ 6 am Sydney (12th)



Meditations for the Soul

Every Wednesday at 8pm GMT (Thurs. in Asia Pacific)

4 pm New York ~ 9 pm London/10 pm Rome ~ 6 am Sydney

Join us in building a new world by clicking the link at atreeoflight.org