



# Tree of Light Circle Conversations

*“What’s Next For Humanity”*

Thank you for joining us.  
Our Conversation will begin shortly.



*Chapter VIII*

# Divine Love





When the light of the soul grows radiant enough to permeate the personality, a new stage of the path begins to unfold. As stated in the ageless wisdom teachings, this is the stage where an individual soul is permitted entry into the kingdom or realm of Souls. These individuals are disciples who have advanced well beyond the state of ordinary human awareness. They have come to realize the spiritual purpose for their existence and have dedicated their lives to fulfilling that purpose.

What enables the disciple to reach this stage is the experience of pure spiritual love—the love radiating from Beings who have transcended all attachments to life in the three worlds (physical, emotional, and mental), and have arrived at a state of selflessness so pure that the love of God flows through them unimpededly. This love begins to pour forth as soon as the light of a disciple attracts the attention of a perfected human soul in the realm of spirit.



Initially, this divine love flows gently and inconspicuously, as the disciple acclimates to the new world of energy. In time, as it is recognized, the power of the energy stream increases. It is this love that holds the individual to the progressively steep and arduous path, through times when deep discouragement sets in and the will to press forward is failing. It is this love that quietly fills the disciple's heart when a sense of isolation obscures the way forward.





From the time of awakening to the higher self, there are external signs of the flow of spiritual love although they are not recognized as such. The occurrence of a spontaneous healing, or an unimagined stroke of good fortune, or an extraordinary synchronicity are seen as singular events related to good karma or fate. Individuals who become more sensitively attuned to the existence of higher forces will begin to appreciate that 'higher hands' are involved in generating such positive twists of fate.

From the start of the journey, invisible forces impact the life of the seeker in ways intended to engender awareness of the living reality of the spiritual realm. However, just as the unknowing aspirant believes that brilliant ideas which suddenly land in their minds are their own, unaware of the subtle process of mental impression by spiritual guides, so it is often assumed that a simple stroke of luck is the cause of their good fortune.





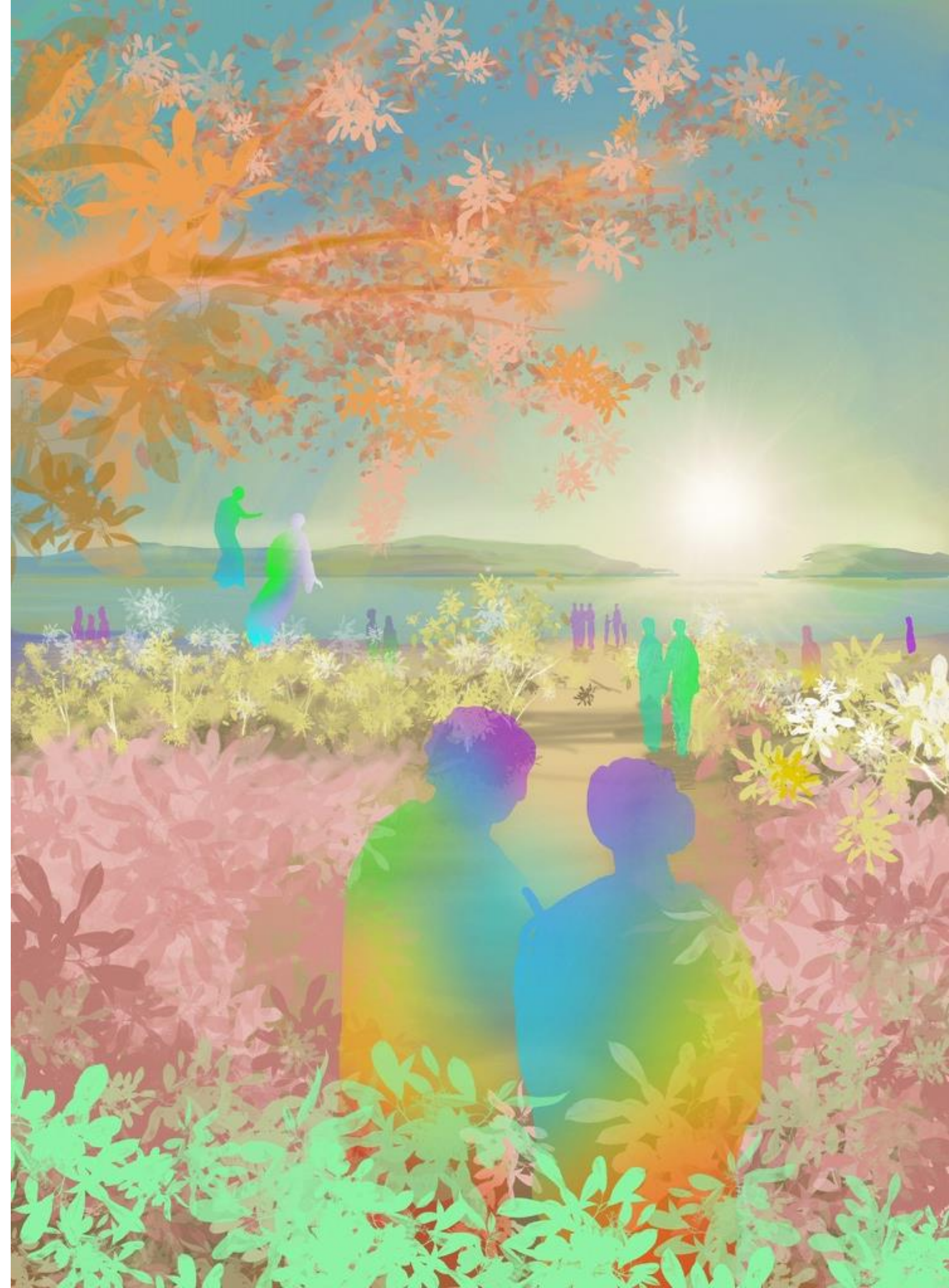


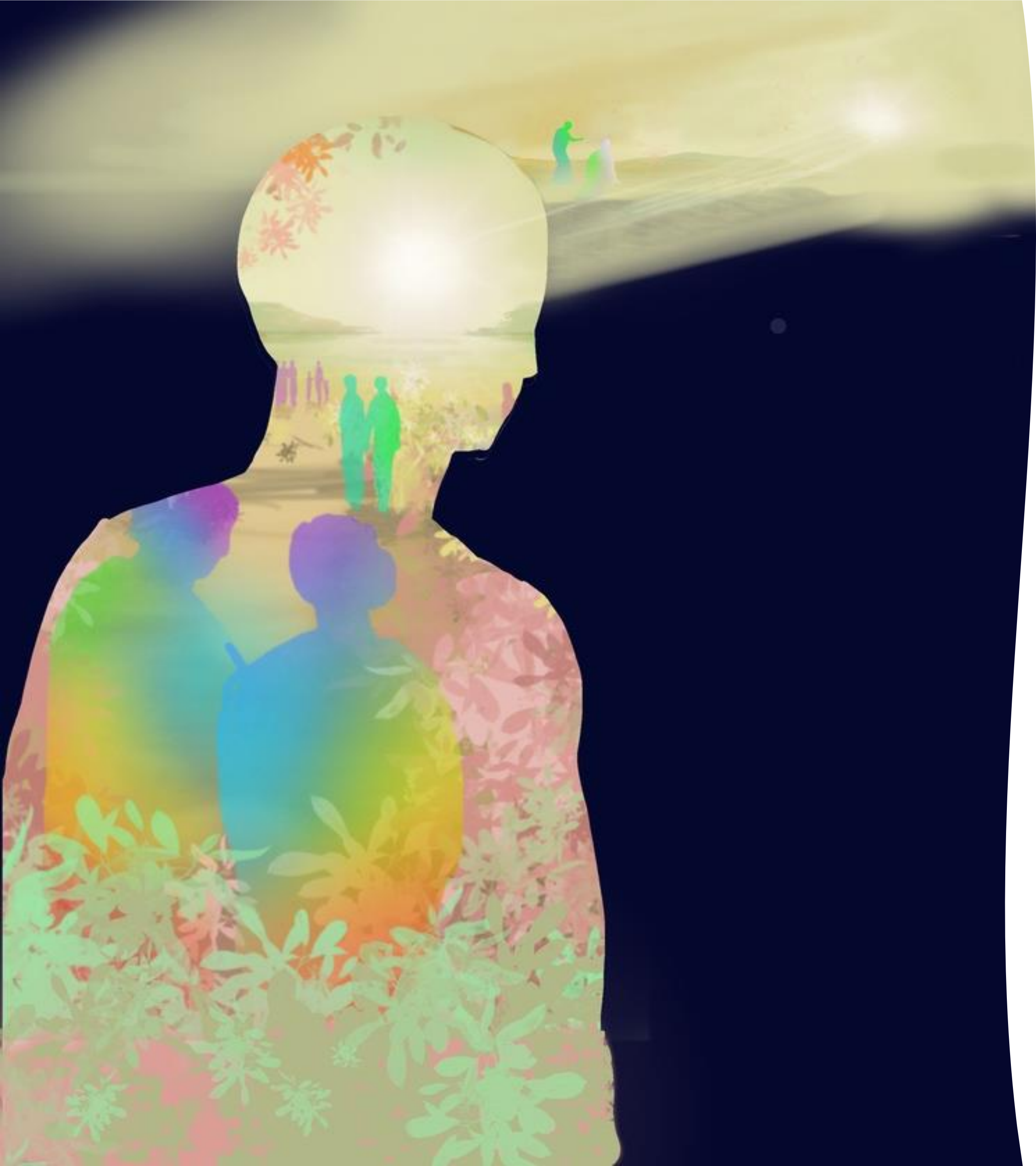
The fact is that the inner government of this planet, the hierarchy of love and wisdom that guides Earth's evolution, is ever watchful for souls of the caliber needed to replenish its ranks. This body of Great Souls is never static. Just as human beings evolve into ever-expanding levels of consciousness, so do members of the spiritual hierarchy. They exist along a vertical spectrum that can be likened to a ladder or a pyramid. Those who are closest to the top, by dint of accumulating the highest degree of illumination, are given the choice of moving onward—either to higher ranks affiliated with Earth's evolution or to other planetary or cosmic lives.

This means there are always openings within the spiritual Hierarchy, the realm of 'graduate humans,' which are waiting to be filled by disciples and initiates in process of mastering and transcending the human condition. At the same time, the Hierarchy has a continuous need for embodied disciples and initiates to implement aspects of the Plan on the outer plane of Earth. When new 'candidates' are identified, they are helped along in myriad ways.



The love poured forth from the Hierarchy to aspirants and dedicated disciples takes many forms. In the early stages of the path, it is often made manifest through the kinds of visible, physical events already mentioned—dramatic experiences that the seeker will initially assign to the realm of miracles. Such experiences leave indelible impressions, causing an overhaul of previous perceptions about reality and drawing the aspirant forward on the path.





In later stages, when the soul begins to consciously register that the source of such happenings lies in subtle realms, the love of spiritual guides and teachers is sensed inwardly. Guidance may come in the form of subtle direction to attend events where relationships are formed that influence the journey. A meeting of kindred souls, mysteriously 'arranged,' generates an inspiring work of art, or music, or literature. Direction is received at a fork in the road where the wrong choice would have had disastrous consequences.



It is in retrospect, as the soul reviews turning points in life that led to its current place on the path, that the love behind these subtle directions is most appreciated. At the time when such inner nudges arise, they may be sensed as part of a benevolent design moving them toward the fulfillment of purpose, without being clearly understood. Even when prods in a particular direction appear to be dead-ends or wrong turns, when later understood to have issued from Elders on the inner planes, they will be understood to have served a purpose on the path of ascent.

There comes a time when the dross of the personality is sufficiently burned away to reveal a soul living in its own light, under its own authority, no longer influenced by the expectations of others immersed in the world of matter. This is the moment when the love of divinity is experienced more directly. A dynamic telepathic relationship is formed with a Master, or with Initiates closely involved in the work of a Master, through which spiritual love flows freely and perceptibly. It is realized, through direct experience, that the nature of God is love and that the universe is conditioned and permeated by a golden web of divine love—the force that binds forms of life that appear separate into one indivisible whole.





Prior to this stage, the aspirant to higher truth will experience moments of joy and possibly moments of bliss—the ecstasy that flows from realizing the true nature of the soul and its capacity to touch divinity in the spiritual realm and in other human souls. At this later stage, those moments turn into a steady state of being. The joy that belongs to the true Self, experienced through communion with the wonders of nature and loving kindred souls, turns into bliss arising from unceasing awareness of the love that permeates the entire universe. This divine love is the invisible engine of evolution, leading all lives at all stages of awareness toward a higher, greater Reality.



The incarnate soul who is initiated into the spiritual Hierarchy becomes a bearer of the light that characterizes this sphere of enlightened beings. Within this sphere, there are no obstacles to the love that issues from the planetary Logos, the lord of our Earth, and His emissaries. Those who dwell there are receivers and transmitters of pure spiritual love—to and from one another and to human beings awakening to the divinity within. The path of entry into this dimension of Earth's life has been shrouded in secrecy until now, when the collective awakening of humanity is preparing many souls for this leap in evolution. In preparation for eons, it is being accelerated by the cosmic and planetary forces that are ushering in the new era.



*What's Next For Humanity?*

## A Tree of Light Circle Conversations

**3/4 August— 8 pm GMT**

***4 pm New York ~ 9 pm London/10 pm Rome ~ 6 am Sydney (12th)***



## Meditations for the Soul

**Every Wednesday at 8pm GMT (Thurs. in Asia Pacific)**

***4 pm New York ~ 9 pm London/10 pm Rome ~ 6 am Sydney***

Join us in building a new world by clicking the link at **[atreeoflight.org](http://atreeoflight.org)**