



Truth is Essential in this Time of Crisis

**Thank you for joining *Circle Conversations*
to Explore New Revelations from Spiritual Elders**

Our Conversation will begin shortly.



Phoenix Letter #6

From Spiritual Elders





A keen observer of life in these times will have noted the intensity of relationships between human beings and their beloved domestic animals, and how this relationship has changed. In the course of recent decades, pets have been adopted as family members in many households. This was not always the case and is still not true in most of the world, where domestic animals such as dogs are prohibited from entering the home and are kept out of doors, often with farm animals. In the West in particular, a certain barrier has been breached, and this is so for several reasons.



*F*irst, there is a human need for companionship that is no longer being met by other human beings. Once the door was opened to exit freely from unsatisfying marriages, many people found themselves living in isolation, as did the children of mothers who were single and away from home earning a livelihood, the elderly and others. The rate of failed marriages and broken families can be viewed in direct proportion to the allowance of pets into homes and their acceptance as domestic companions.

Second, beyond companionship itself, there exists between most pets and their owners a strong bond of love that is often found missing from the members of a given family. This bond is qualitatively different from the love between human personalities, in which one makes demands on another and withholds what is accepted as love until and unless such demands are met. A pet offers love without demands or conditions, simply wanting to be loved and fed in return.



Third, the growing animal-human relationship is a factor in the breakdown of barriers between the kingdoms in nature. The love freely given by animals is an increasingly significant feature of planetary life—one that manifests the love that substands and pervades all dimensions of the One Life. Amid the present epidemic of hostilities afflicting much of the globe there is, for growing numbers of the human race, a steady source of love emanating from the animal kingdom that contains, whether or not consciously perceived, a source of reassurance from a loving God.



We make this statement in all seriousness. Were the animal kingdom to be withdrawn from the scheme of Earth life, before the human kingdom arrived at the need to open wide the petals of the heart, the level of misery on our planet would increase a hundredfold. We refer primarily to domestic animals, yet the love latent between the human species and most other animals has also been amply demonstrated in recent times.





The point is that the barriers that once existed between members of the animal and human kingdoms are being dissolved by the energy of love. Moreover, love received by human beings from members of the animal kingdom has proven to be a salutary force not only for those human individuals with close relations to animals, but for the softening of the shell of the heart of humanity, without which relations between members of the human and spiritual kingdoms could not come into being.



*E*nvision, if you will, a 19th century British gentleman, a lord of the manor with a grand estate, whose passion and past-time is studying the great philosophers. He spends his days living inside of his mind, barely noticing his spouse and children, sensing himself to be alien from their interests and concerns. His only true companion is the family dog who accompanies him on long walks through the countryside. The cool reserve of the British elite of that time was such that the most heart-stirring relationship of such a man might have been with his pet. The companionship of other men of his ilk and interests would offer him mental stimulation and a sense of collegiality, but surely not unqualified love.



On this foundation of understanding, We will attempt to enhance your awareness of the love that defines the relationship between a Master and His disciples. It is also unqualified love, but something is required of the disciple in order to unleash the flow.

One of the reasons for the seeming impenetrability of the barrier between our two kingdoms is a misunderstanding of the relationship that must be established from both sides. The love of a Master is not freely given, as that of a household pet, though it is of the same basic substance emanating from the Heart of the Sun.

The free flow of love from a Master to a disciple is earned by the disciple's willingness to adhere to those disciplines that produce the needed resonance with Our Ashram—the refinements of thought and character that raise one's vibrational frequency sufficiently to attract the Master's attention which is, by its nature, infused with love.





The term “externalization of the Hierarchy” should bring to mind first of all the quality of Love. The Masters who will come forth in places prepared for them will be, among other things, “adjusters of the scales of love.”

Just as They will gravitate toward those places on Earth where They find a resonance in consciousness—where there is a field of inclusive spiritual love—they will, in turn, adjust the scales by reinforcing the “quotient of love,” increasing it through a process parallel to *"Invocation"* and *"Evocation"*.

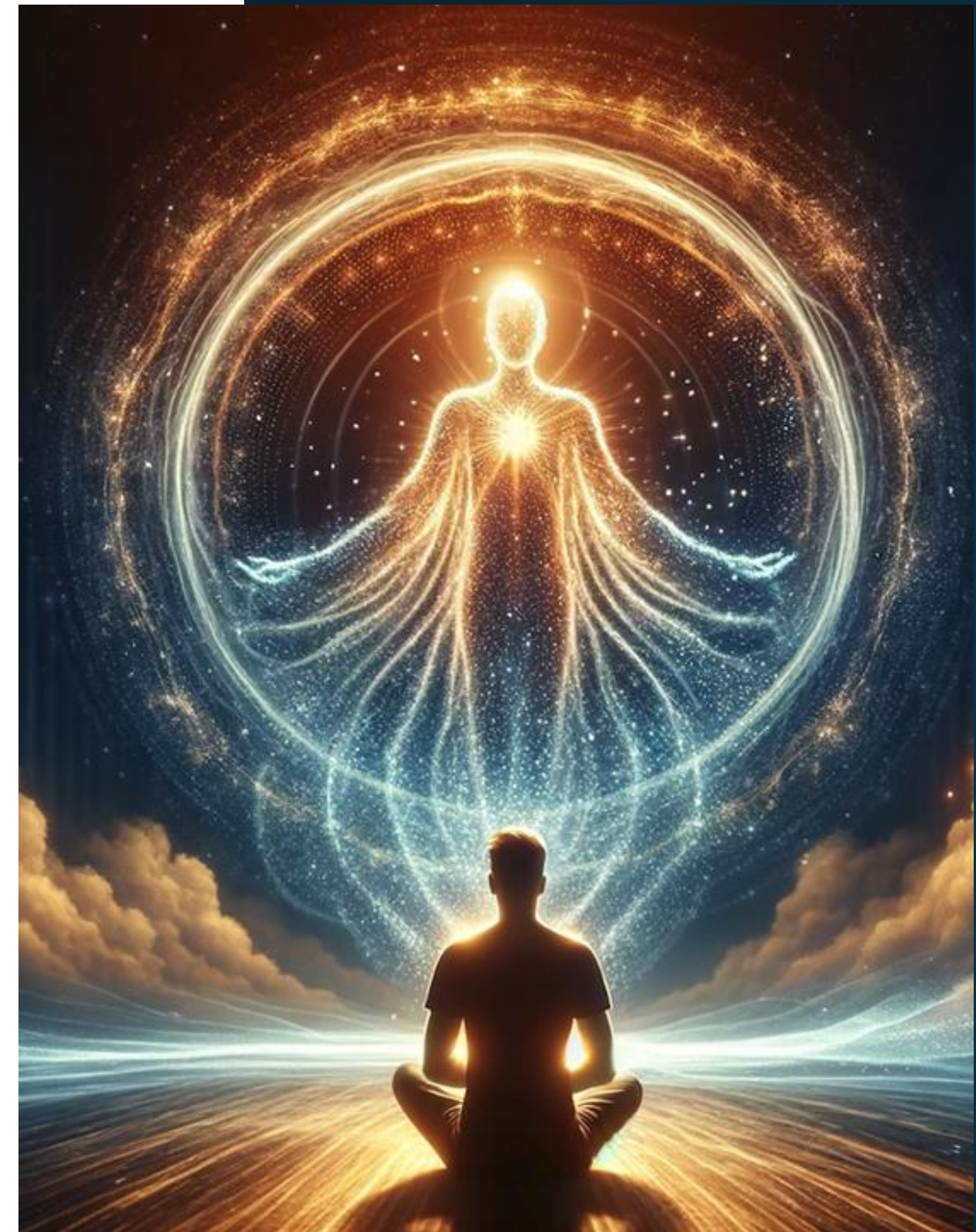
In this way, We will together, Masters and their Disciples and Initiates, prepare for the arrival of the World Teacher in visible form.

We stand ready and waiting, on Our side of the bridge in consciousness, to allow the love of the Hierarchy to pour forth in ever greater abundance into receptive human hearts and from there, into the world. The power accompanying Our emergence will flow from this love, directed by divine Purpose. The words “heart center of the planet” (the Kingdom of Souls) will no longer take the form of a concept but will take on the livingness of a pool of energy aimed at nurturing into manifestation the Plan for the Aquarian Age. This process has begun and will assume greater force and impact as groups working consciously with subtle energies become servants of the Living God.



It is time, now, to bring the energies of conscious world servers to focus upon that span of the Path that constitutes the weakest link: the distance between the mind and the heart. The age of the dominant mind is now ending, leaving a trail of destruction that has devastated much of the Earth.

Until mind becomes the servant of the heart, the Plan will be further delayed. The creation of the Aquarian civilization and culture hinges upon the subservience of the highly developed faculties of mind to the unfolding rose of the heart. This is the fulcrum upon which rests the sensitive flower of the Future.



In the coming age, when We are once again enmeshed in the life of Humanity, the leadership ranks of culture and civilization will be filled by those who vibrate to the frequencies of Love and Wisdom.

Our Task, between now and the time of the shift in the planet's composition, is to establish the maximum alignment possible between the human soul and the Will of the Solar Logos, the God of our Solar System—for the salvaging of as many incarnate souls as possible.





QUESTIONS

The letter indicates that for an increasing number of individuals, “the steady source of unconditional love emanating from the animal kingdom, whether or not consciously, is in reality a source of reassurance from a loving God.” It suggests that this deepening bond between humans and animals has helped to soften our hearts, and that such a connection is vital for fostering relationships between humans and the spiritual realm.

What qualities do our pets evoke in us that we may not often experience with other people?

How might these qualities help us prepare to bridge the divide between the human and spiritual dimensions?





We are told that the free expression of love from a Master to a disciple is earned by the disciple's *willingness* to follow the practices that foster the needed resonance with the Ashram.

By refining one's thoughts and character, an individual can elevate their vibrational frequency enough to capture the Master's attention, which is naturally imbued with love.

What do we notice when we maintain a higher level of thought refinement?

What actions might we take now to establish a clear pathway for communication with the higher realms?

The Elders draw upon the established connection between the realms of animals and humans to demonstrate how divisions can be bridged between these kingdoms.

As humanity strives upward, the Hierarchy extends its influence downward. This interplay is referred to as the science of invocation and evocation.

How might we assist in this process?



We are informed that the Elders are prepared to channel the love of the Hierarchy into “receptive human hearts, and from there into the world.” The forthcoming era of peace will depend on the strength of the human mind and its alignment with the heart’s wisdom. The Aquarian Age will be realized through the continuous outpouring of divine love.

What happens within us when the mind yields to the heart?

Can we see examples of this occurring in the world?



Truth is Essential in this Time of Crisis

**Join Circle Conversations
to explore 'New Revelations from Spiritual Elders'**

MARCH 1/2 ~ 8 pm GMT

3 pm New York ~ 8 pm London/9 pm Rome ~ 7 am Sydney (March 2)



Meditations for the Soul

Every Wednesday at 8pm GMT (Thurs. in Asia Pacific)

3 pm New York ~ 8 pm London/9 pm Rome ~ 7 am Sydney

Join us in building a new world by clicking the link at **atreeoflight.org**