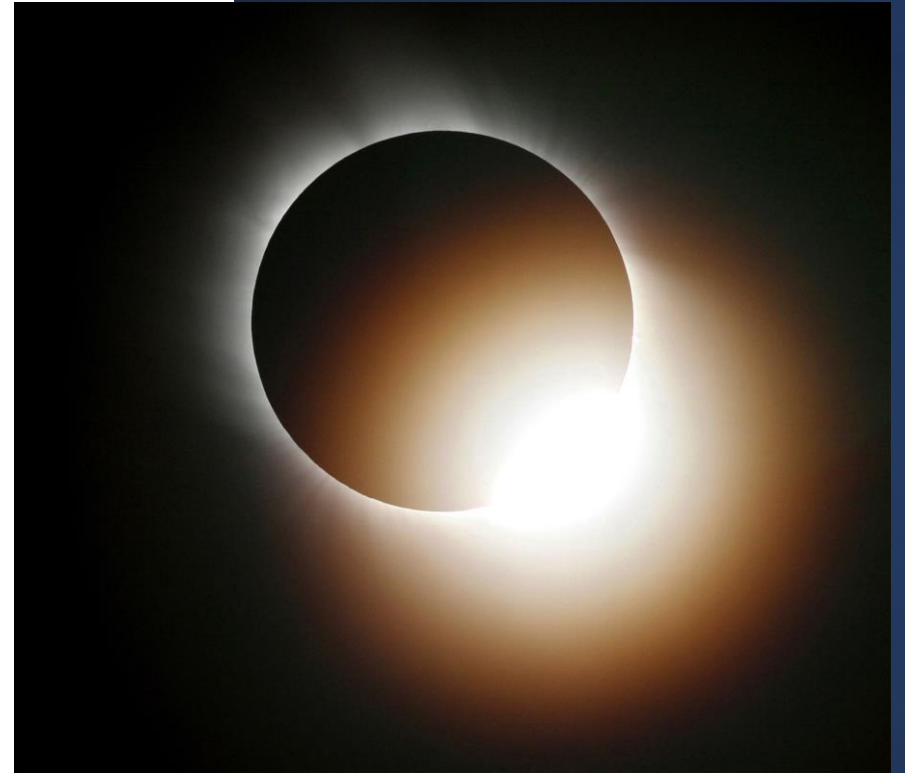



THE REVELATION  
OF THE HIERARCHY  
OF LIGHT





In the Book of Revelation it is written that ‘a holy city’ will descend from the clouds along with Christ, forming a ‘new heaven and new earth.’

---


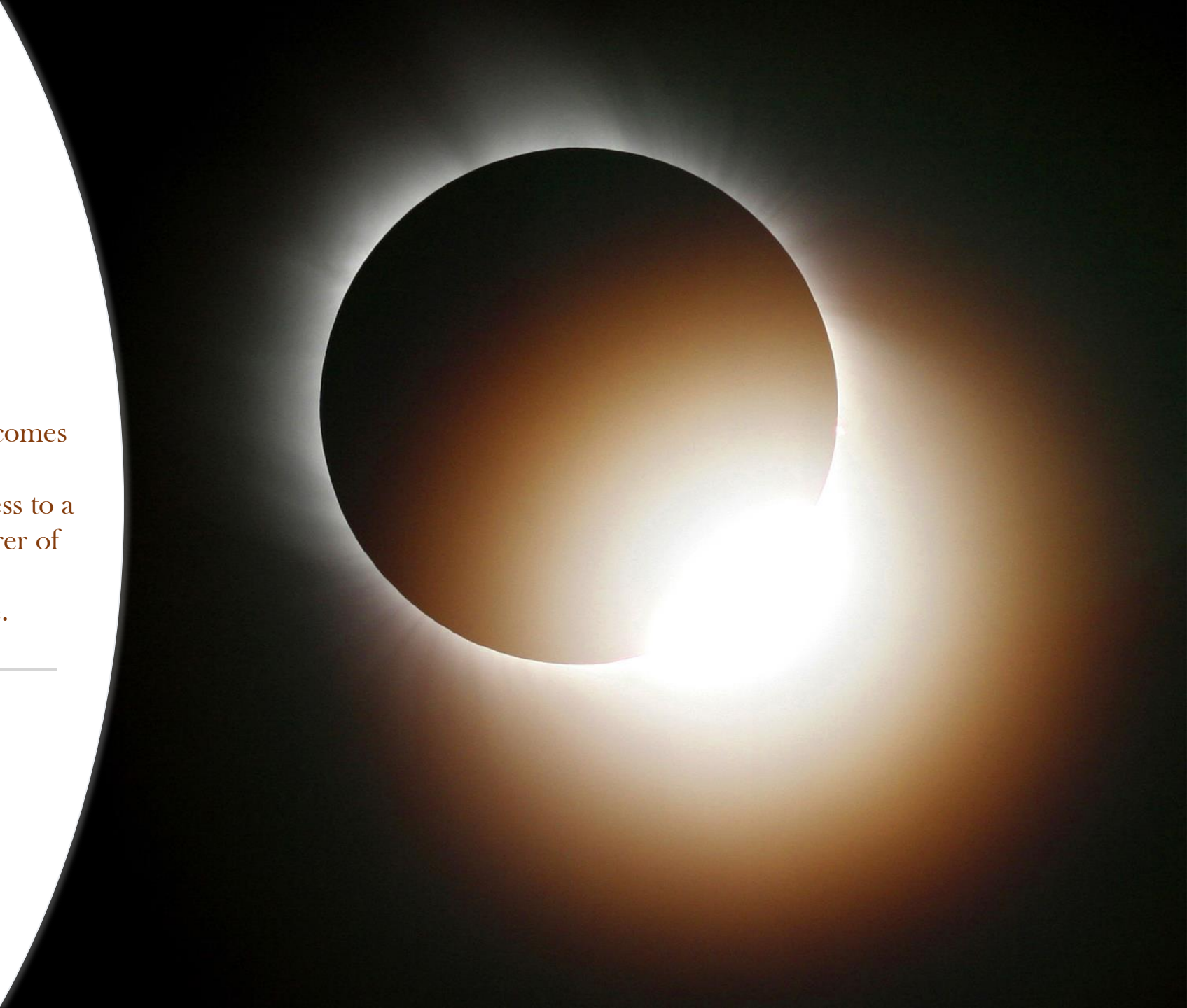
What will actually descend first upon the world to be established on the etheric plane will be an overlay of Christ Consciousness, a process that has begun with the awakening of humanity’s Soul. Diverse forces of a cosmic nature have converged in this moment to bring forth a ‘layer’ of Christ Consciousness from out of the depths of darkness that has pervaded the world of materiality.





Cosmic Rays and astrological forces have played into the intentions of the planetary Logos in a way that has prepared the ground for 'the risen Christ consciousness' to appear on Earth. However, just as the electronic 'wiring' of the planet has reconfigured human inter-relationships with little awareness of the implications, so has the spirit of Christ re-entered the world with little fanfare or even recognition.

---



And so it must be until the moment comes for the reversal of the poles that will coincide with the shift of consciousness to a higher plane as the human Soul, bearer of Christ's consciousness, becomes the centripetal force of the Aquarian Age.

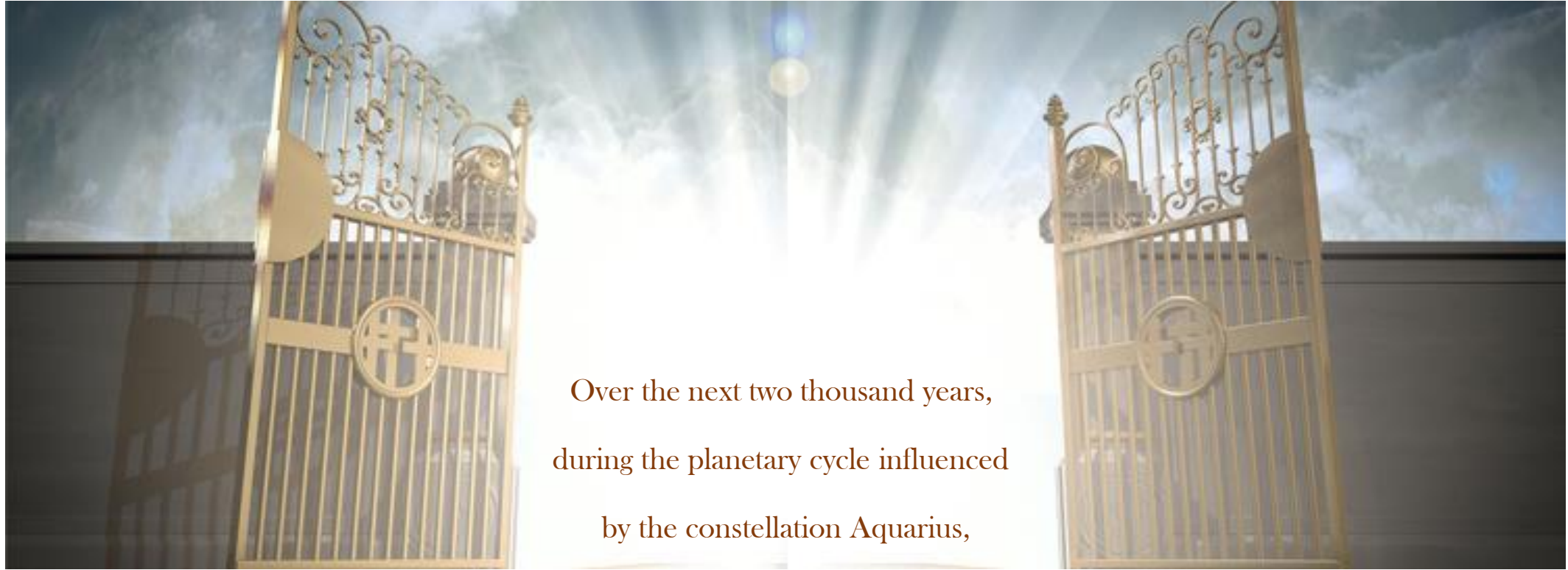
---





---

The end of the hegemony of the dark forces on Earth is mandatory for the evolution of planetary life. As We have been saying, events are already underway to the extent that the human race has been rapidly interconnected by mechanical-electrical means and a degree of love-wisdom is already arising from the heart of humanity. It doesn't take much to extrapolate from these radical changes in form and consciousness where these apparently separate lines of development are leading.



Over the next two thousand years,  
during the planetary cycle influenced  
by the constellation Aquarius,

the goal of the evolutionary plan is to expose the inner workings of the Kingdom of God  
and unveil to humanity the path of consciousness that leads into  
this higher kingdom.

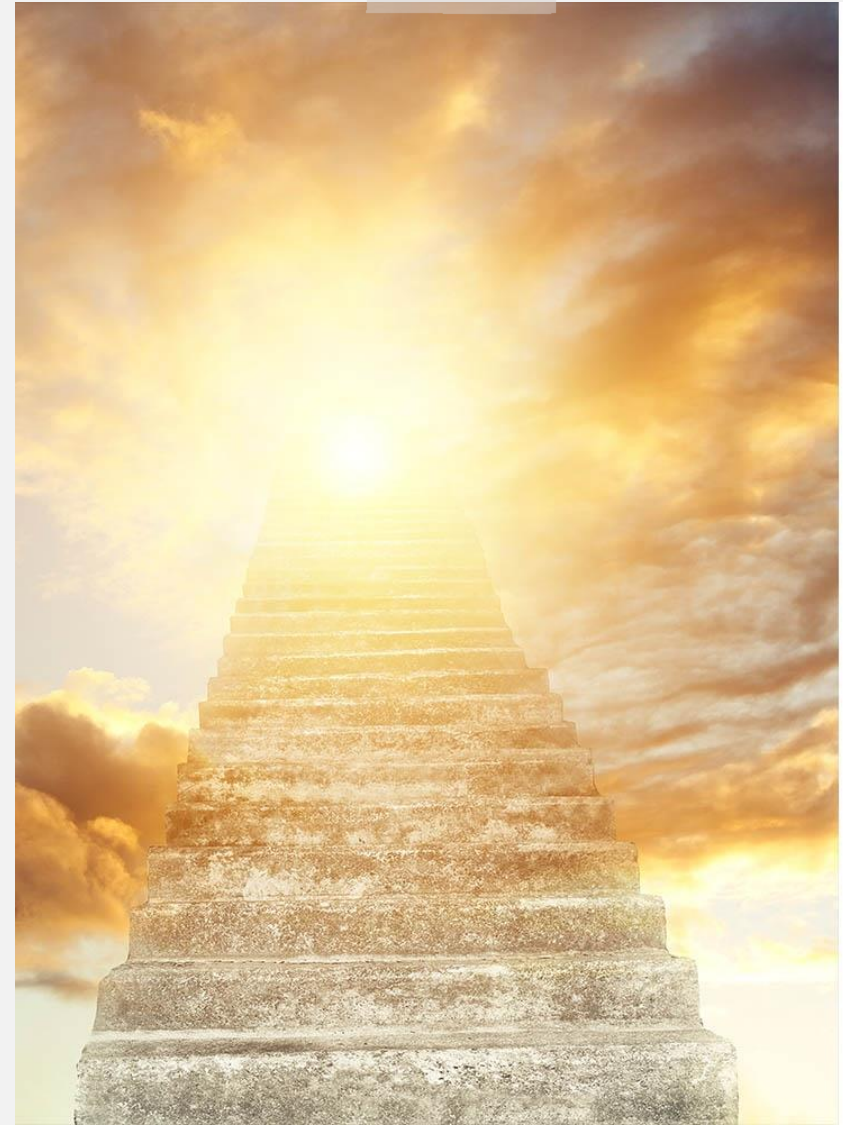




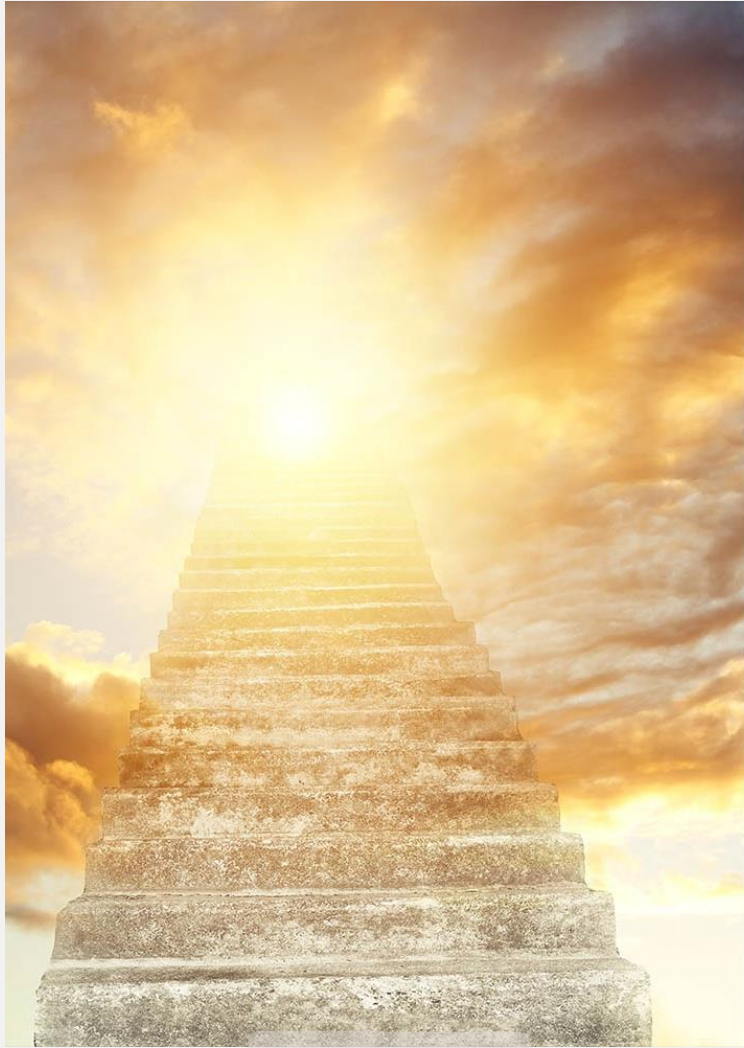
This is the mission  
of the planetary Logos  
in the coming world era.

To reveal the Kingdom of God is to expose the hierarchical ladder of consciousness on Earth and the means of ascending the rungs of this ladder. The way out of the darkness of matter is the way of Light that proceeds step by step and stage by stage to augment the light of this world.

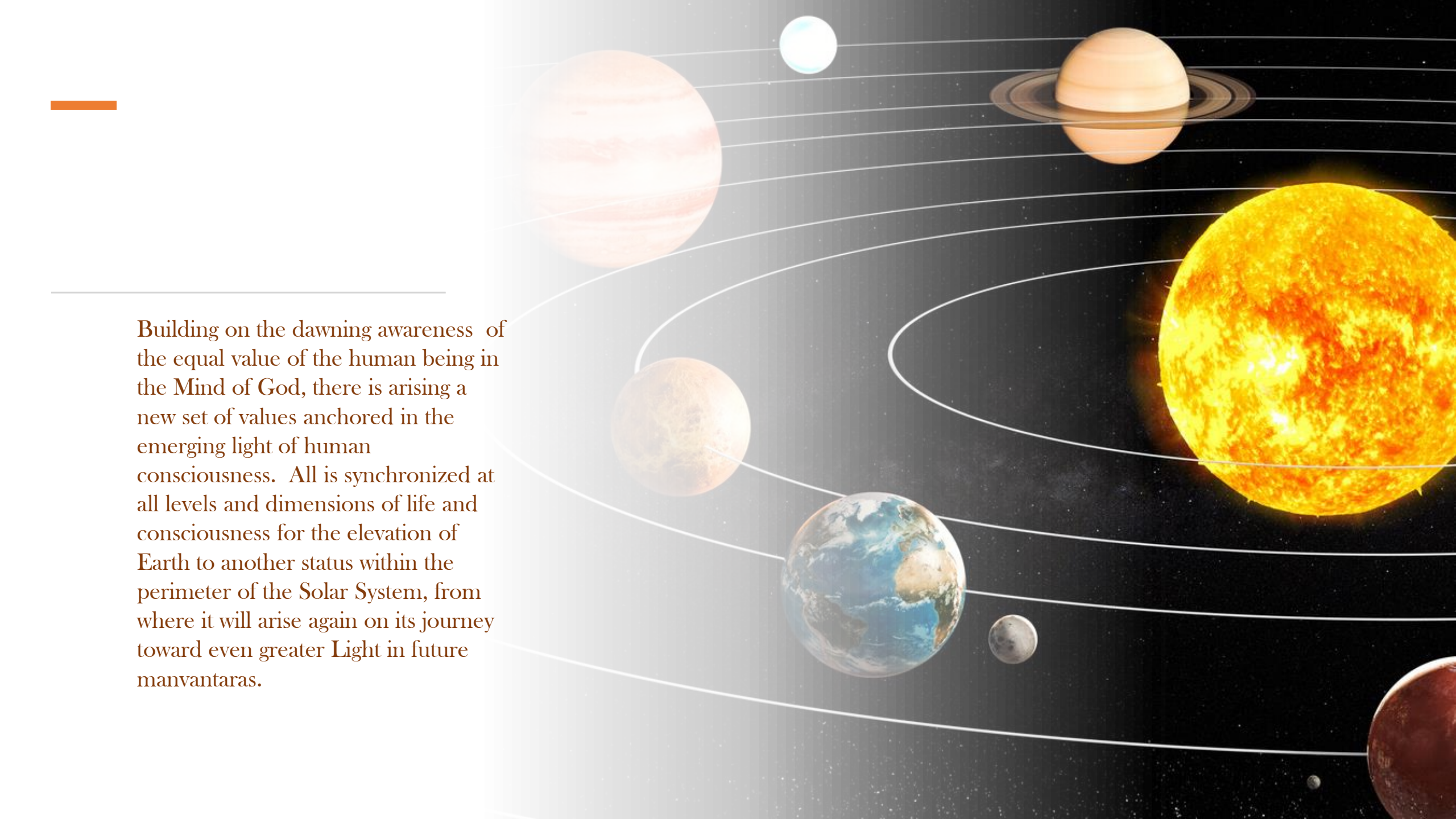
It was necessary to veil the existence of this hierarchy of consciousness until now, until humanity succeeded in establishing the principles of social equality on the horizontal plane, based on the equal value of every human being. This crucial stage in the unfolding plan has not yet been achieved but is well on the way to ultimate attainment for the first time in human evolution.







As the path of Earth ascends to a higher plane it has become essential to expose the Reality of higher levels of consciousness toward which the planetary Life is headed on its journey toward unity with the planets within the Sun's system that have already achieved the designation 'sacred.'

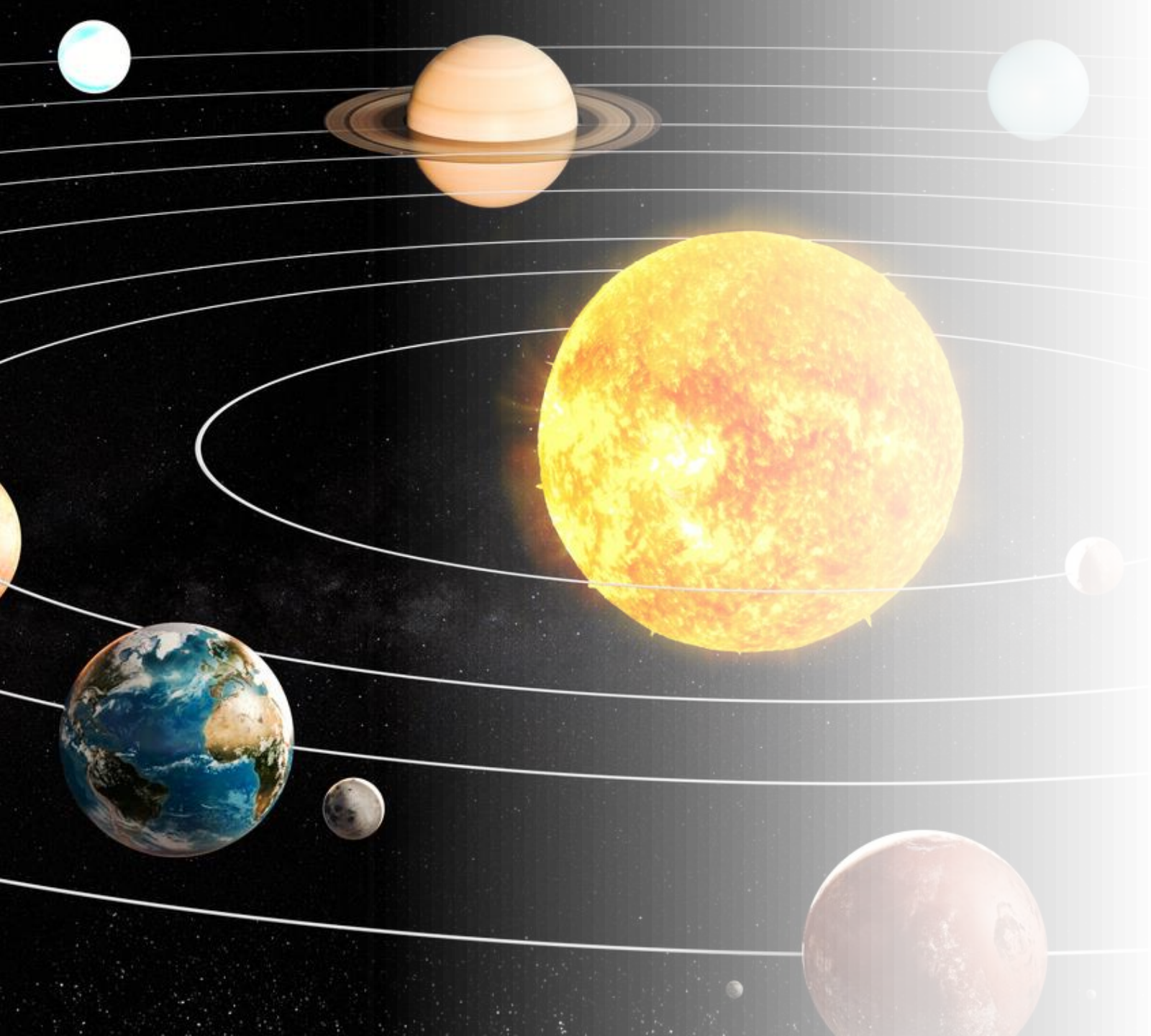


---

---

Building on the dawning awareness of the equal value of the human being in the Mind of God, there is arising a new set of values anchored in the emerging light of human consciousness. All is synchronized at all levels and dimensions of life and consciousness for the elevation of Earth to another status within the perimeter of the Solar System, from where it will arise again on its journey toward even greater Light in future manvantaras.





---

We reiterate . . .

that changes are occurring in the universe of our galaxy that will expand the narrower ring-pass-not of the Sun's system of which Earth is but a small part.



---

In spite of all the current waves of destruction, nothing is being lost from the Earth scheme that will not be replaced at a higher octave in a world of shimmering light, resplendent color, and majestic sound—a world of flowing energies in which consciousness will be free to direct the life unencumbered by the weight of dense form and the laws of gravity.



---

Instead, the forces of electro-magnetism will guide the flow of thought between senders and receivers and the motion of etheric bodies from 'place' to 'place.' If this is difficult to grasp mentally, we redirect your awareness to the current 'travels' of thought around the globe and to the interconnectivity of physically motionless human beings.



---

The visual exposure of the **Hierarchy of Light** will begin as soon as the ‘corner has been turned’ more fully into the **Aquarian** energy field. The laws of manifestation will be reframed for human understanding in light of the emergence of levels of conditioned awareness beyond the unconditioned ordinary human awareness.

We use the word ‘conditioned’ to mean ‘achieved’-levels of awareness achieved on the path of ascent, for each stage has conditions for attaining the expanded state of consciousness that it represents.







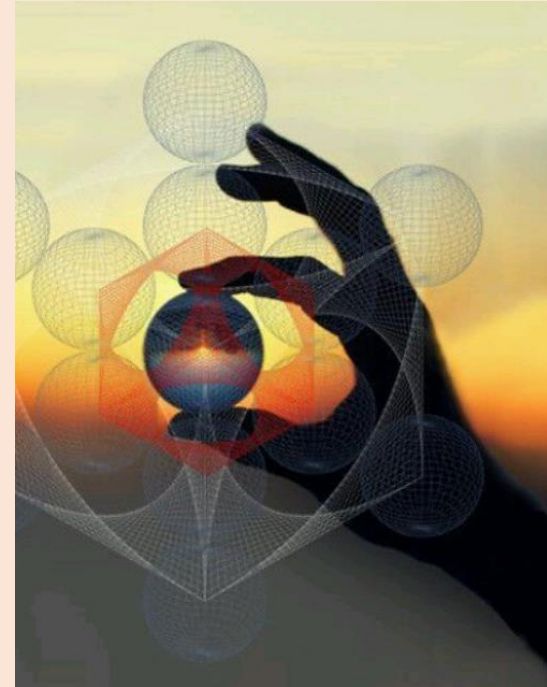
---

Each stage in the hierarchy of consciousness manifests a somewhat different reality, as will be realized by those who passed through the stages of probationer, aspirant, disciple and perhaps initiate. The greater always contains the lesser but the lesser cannot comprehend the greater and so each stage must be experienced to know its progressively unfolding reality.

In the coming era, passing from one stage to another in this ascending 'stairway' of consciousness will become the purpose of life for souls beyond the unawakened stage wherein the still, small voice can as yet barely be heard.



In the new era, the pursuit of money and matter will be replaced by the soul's pursuit of the light of truth, the love of beauty, and the joy of service to the greater good. This does not lie in the immediate future, but after a great period of adjustment it will be realized that there is no longer a need for the mechanical objects or material dwelling places purchased with money.







---

The primary need of individual souls will be to quench the thirst for spiritual understanding and to pursue the Way of Spirit into increasingly more enlightened spheres of awareness until the unified field of Reality is known to the soul and the once-esoteric concept of synthesis becomes exoteric.

That is the goal of our planetary Logos in the coming age and the reason for His sacrificial descent into form for the millions of years leading to the point wherein the goal may finally be reached.

The point of departure for the immediate future lies in the realm of consciousness. We are writing this letter to aspirants and disciples, but mainly disciples who will understand the reality of the chain of hierarchical consciousness that informs the life of Earth.

Many understand the concept but have not yet made the conscious breakthrough from idea to the living reality of the spiritual Hierarchy. This is because many of the disciplines of the discipleship path have not yet been mastered.





The main obstacles are attachment to the things of the form world and insufficient mental control of the emotions. Until the mind firmly controls the astral body and the things of this world are seen for what they are, there will continue to be a break in the descending chain of light and light-bearers.



Those who aspire to serve by building the bridge of ascent into the new Earth  
are urged to commit themselves to a greater exertion of self-discipline.  
An unbroken flow of Light is especially needed in these treacherous times.



[Click here for the next section](#)