

The Phoenix Letters

#20

Guidance from spiritual Elders



As this cycle plays itself out, the value of Our communications with you is incalculable. We are, together, by increments of light and love, building the framework for the play of intuition that will substand the coming age of light.

It will revolve around subtle grades of light as *truth*, light as *knowledge*, light as *wisdom*, light as *beauty*, light as *love*.



Were this degree of change easier to convey, were there a proper vocabulary for translating the living reality of differing grades and qualities of energy, we would resort less often to metaphor.

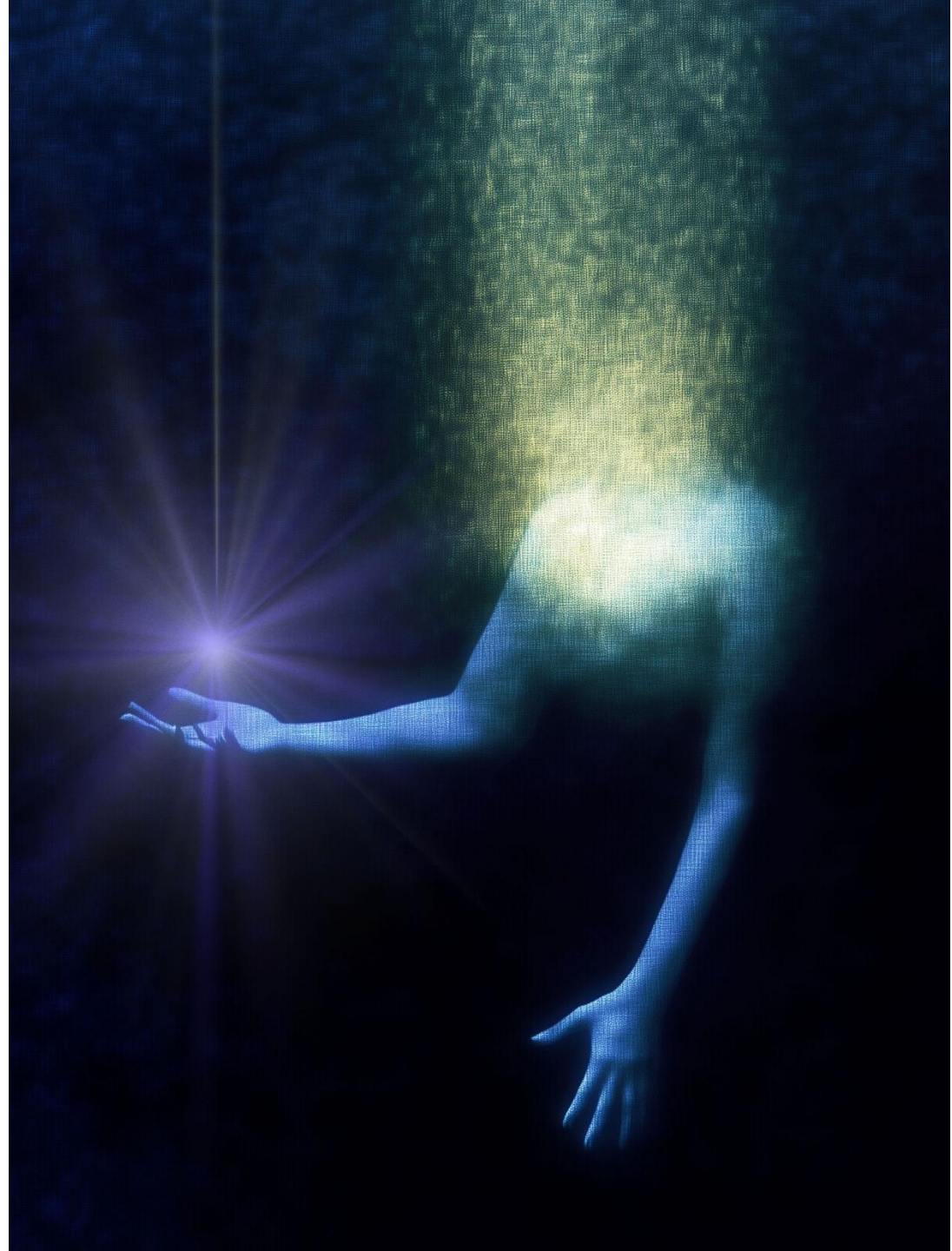
Given present limitations, however, We ask you to imagine yourselves ‘swimming’ in a vast ocean of light—the light that is the substance of the etheric plane. Within this ocean of light, there are darker/denser regions and lighter/subtler regions. You naturally make your way to the latter.



As you linger in a lighted region, you notice a progression of color more exquisite than any you have ever observed on the dense surface of Earth. You are drawn magnetically toward a stream of color so intensely beautiful that you can sense it raising the vibrational frequency of your entire being as you approach. While bathing in the stream—of shades of gold, or red, or blue, or rose or indigo—you become aware of an ‘edifice’ arising inside of which you notice a Master and His Ashram. By the frequency of the color and corresponding sound you are drawn to a particular group, in which the Master is giving instructions to His disciples and aspirants.



As you linger and listen, you are drawn into the flow—into a vortex of energies—and find yourself ‘spinning’ more rapidly, attuning yourself to the frequencies of color and sound. You rest there for awhile, allowing the energies to permeate every particle of your being until the time when there is no longer a sensed difference in frequencies—until you are enmeshed in the vortex of light to the point that it becomes, for you, a new ‘home.’



Increasingly, you are swept along in the stream of life that becomes your new identity, at-one with all who surround you. Thus do you embrace your Ashramic task.



Swept up in it energetically, you become its advocate, its embodiment. Thus the note of the Master finds new instruments of expression.

This metaphor is closer to reality than you may at present realize. When the gates open wide upon the new expanse of Earth, you will see, 'standing' before you, in flowing form, the 'edifices' of which We speak. There you will find, by the force of magnetic attraction, the home that will be yours for a cycle of living—the hub of spiritual life that will infuse your soul with its *light*, with its *purpose*, and with its *love*, opening the heart to the direct inflow of the love of the Christ—the Teacher of the new dispensation in the coming era of the human soul.



Truth is Essential in this Time of Crisis

Join Circle Conversations

to explore **‘New Revelations from Spiritual Elders’**

September 20 ~ 8 pm GMT

4 pm New York ~ 9 pm London/10 pm Rome ~ 6 am Sydney (September 21)



Meditations for the Soul

Every Wednesday at 8pm GMT (Thurs. in Asia Pacific)

4 pm New York ~ 9 pm London/10 pm Rome ~ 6 am Sydney

*Join us in building a new world by clicking the link at **atreeoflight.org***