

RESPONSES FROM THE SPIRITUAL HIERARCHY TO GROUP QUESTIONS



In the early years of this group experiment, which began in 2016, communications received from the Hierarchy focused mainly on spiritual growth and higher realities. The intent of our Teachers was to form a group organism that could work in cooperation with members of the Hierarchy. In 2019, the experiment became interactive. The group was given a practical assignment (see the 'Creations of Wisdom and Beauty' webpage), and an opportunity to pose questions to our spiritual Elders. Below is a sampling of questions and responses received over the course of several years.

THE HEART AS DISCERNER OF TRUTH



Q: How do we deal with the great problem of discerning truth?

R: At the highest levels of consciousness there exists ultimate Truth—the principle upon which the entire universe rests. Truth on that level is inseparable from Light and from Life. Truth is also inseparable from spiritual Law and thus it is the bedrock of the functioning universe. When Law is corrupted by the absence of truth, the result is disorder and decay. This has been occurring in the outer world to the extent that natural law has been countermanded by humanity, with dire consequences to our planetary life.

We are aware of the many versions of truth competing to occupy human minds in this time of crisis. The way to discover whether to believe an idea or a theory is to co-measure it with your perception of Higher Truth. The mind alone cannot be relied upon to separate truth from illusion. The great discerner of truth is the instrument of the heart, for the heart is the portal to the downpouring light of the soul that penetrates the mind with its wisdom. How does your heart respond when you land upon a statement of truth? Is there an energy flow that charges the cells of the body with light? Is there a sense of well-being that flows from the soul's registering of Truth?

(May 2021)

PASSPORT TO THE NEW WORLD



Q: How has the coronavirus impacted our passage into the new world?

R: To enter the new world is to enter a higher stage of consciousness. The new world is not a 'place' so much as an awareness of greater Light and greater access to that Light. It is the soul's light that sparks the realization of the interconnectedness of all life, and this in turn evokes the aspiration to contribute to the creation of a better

world. The consciousness of being part of a larger whole elicits a sense of responsibility for life beyond the isolated self. This expanded awareness will be the basic building block of life in the coming era.

The coronavirus pandemic is serving to expand humanity's awareness of interconnectedness. It is exposing the reality that the health and the economic and social welfare of humanity are intimately interrelated, while revealing the immediate impact that human beings have upon one another. And it has pried open the heart of the race to the immensity of human suffering. The result is that when the shift finally occurs, the consciousness of a greater number of souls will have been prepared for and will be longing for the Light and Love of the new world.

The 'passport' to the new world will consist of an expanded awareness of life and concern beyond self-interest, along with goodwill and essential goodness. All such souls will be swept along into the new world by the powerful stream of evolution that has been setting the stage for the new era. *(February 2021)*

MIND AND THE SPIRITUAL PATH



Q: What is the role of the mind on the spiritual Path?

R: The initial goal for aspirants on the Path is to develop mental control of the emotional body. Progress on the Path requires that the mind of the seeker is able to register the light of the soul, which becomes possible when the mind exerts its power over the emotions. As this occurs, the practices most essential to the spiritual path can be learned: dispassion, detachment, and right discernment. Discernment of truth requires a purified stream of soul light to reach the mind. Recognition of truth and adherence to it create the conditions for the soul's steady progress on the Path

and effective contribution to a field of service. They form an indestructible base upon which the soul can construct the bridge of light to the inner world while standing in the light of truth in the outer world. (May 2021)

AUTISM AND THE SOUL



Q: Why are so many children being born with autism and related conditions at this time? What is the best way to help them?

R: Let us first consider the physical causes. The chemical causes of climate change are not unrelated to autism. Pregnant women are more vulnerable to chemicals in the atmosphere that pass through the placenta supporting the embryo, and this can affect the DNA of the child.

Esoterically, this condition fosters the working out of karma of the child and family members as it is a condition that demands extreme self-sacrifice from caregivers. This is one of many ways in which karmic debt is being paid prior to the opening of the portal to the new era, as healing this and similar conditions is contributing to awakening the soul of humanity. Successful caregivers of autistic children are those who are driven far beyond the normal demands of parenting to heal and to love. In that expanded sphere of love, they connect with the soul of the one they are trying to heal and through that bond of love, they can coax the soul of the sufferer into expression.

The child becomes the center of a network that can include parents, medical personnel, therapists, teachers, and others. Under optimal circumstances, every such network becomes a nexus of loving support within a larger network. Every such network can, by its very nature, become a source of soul awareness as it is through soul connectedness that most healing occurs in cases of autism. (March 2021)

HUMANITY'S SOUL AND THE SHIFT



Q: How does climate change relate to the Shift of the Ages?

R: In this final stage of the Piscean age, there is no one alive who is not aware of the drastic changes occurring on the surface of Earth. Climate conditions are changing in ways that are making life increasingly untenable for human beings, as well as for the animal and plant kingdoms. While wisps of hope are emerging from the realm of technology, most inventions are born of the level of consciousness from which the present crises have sprung and do not take into account the erosion and decline of Earth's biological systems and species of life, whose balance and harmony have been ravaged by human action.

The restoration of balance and harmony on Earth will depend upon the evolution of human consciousness — on the soul's dawning awareness of the fundamental interrelatedness of life. Humanity is destined to become the mediator between the higher and lesser kingdoms of Earth as its consciousness expands, and this expansion can already be witnessed in scattered pockets of the human race. With the shift of the ages, the planetary lifewave will advance to a subtler plane of Earth, where soul consciousness will flower under the guidance of Masters and Their externalized ashrams, giving rise to a new world. (*May 2021*)

CONSEQUENCES OF SUICIDE



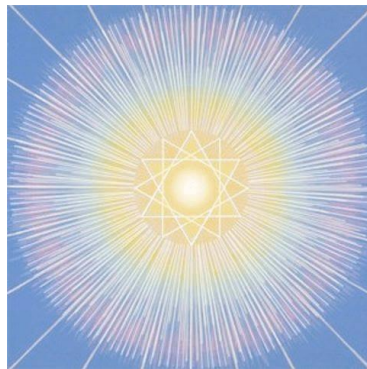
Q: Can the souls of people who commit suicide incarnate in the New World after having undergone a period of purification on the subtle planes?

R: Of all the distortions of truth purveyed by traditional religions, one of the most serious is assigning people who commit suicide to 'hell,' while those who live their lives committing harm against others are often assigned to 'heaven.'

There are two dimensions to this question: one relates to the realm of form, the other to the plane of consciousness. Outwardly, on the plane of form, suicide is the destruction of a life and that goes counter to the will of God—the Creator of life. However, when seen through a spiritual lens, from the unseen side of the tapestry, the act of ending a life prematurely has a different effect. It deprives the individual of the opportunity designed by his or her soul to grow from that particular lifetime of experience. When a life is ended prematurely and unnaturally, the intended lessons are not erased, they are merely postponed. They will appear again in another guise in future incarnations, with differences in the details but the lessons will remain the same.

Is there a karmic penalty in a subsequent lifetime for ending one's life unnaturally? Our answer would be 'no,' as our God is not a vengeful God. Crossing the threshold into the new world depends upon the soul's accumulation of light over innumerable lifetimes, not upon a single lifetime. All who pass through the portal to the new world will have advanced beyond needing to experience karma of a dense physical nature. The remaining learning on the Path will relate primarily to the emotional and mental bodies. In the finer atmosphere of the etheric plane, with the permeability of physical-etheric bodies, this learning will be more rapidly assimilated. If the soul's intention is aligned with the Forces of Light, the act of suicide in one lifetime will not prevent its entry into the new cycle of Earth's evolution. (March 2021)

THE VALUE OF THE GREAT INVOCATION



The Great Invocation

From the point of Light within the Mind of God
Let light stream forth into the minds of men.
Let Light descend on Earth.

From the point of Love within the Heart of God
Let love stream forth into the hearts of men.
May Christ* return to Earth.

From the centre where the Will of God is known
Let purpose guide the little wills of men –
The purpose which the Masters know and serve.

From the centre which we call the race of men
Let the Plan of Love and Light work out
And may it seal the door where evil dwells.

Let Light and Love and Power restore the Plan on Earth.

*Many religions believe in a World Teacher, a “Coming One,” recognizing him under such names as the Lord Maitreya, the Imam Mahdi, the Kalki Avatar and the Bodhisattva. These terms are sometimes used in versions of the Great Invocation for people of different faiths.

Q: What is the value of the Great Invocation at this time? Is there another invocation or mantra that might be given to maximize our efforts at this crucial time?

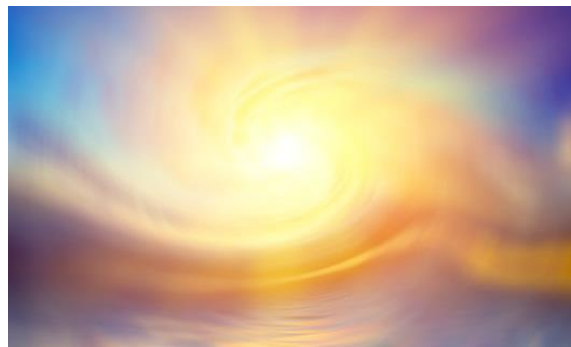
R: For nearly two thousand years, the Lord’s Prayer was the primary prayer of Christendom; it held sway over the Christian world until the world wars and pandemic of the last century. It was then that religion, the Christian religion in particular, began to lose sway over western civilization. The devastation of the wars was so great that it cast doubt about the existence of a loving God. At the same time, science was making phenomenal breakthroughs and gaining influence over human minds. It was in that atmosphere, in the final year of World War II, that the Great Invocation was given out.

The intention of this invocation was to shift human consciousness from the father-child relationship of the Lord’s Prayer to the stance of reciprocity between divinity and humanity for the working out of the Plan. This invocation and its adherence around the world are signs of the shift in human consciousness toward accepting

responsibility for the fate of the Earth and recognizing the role of the individual in its restoration.

The Great Invocation represents a milestone in the evolution of human consciousness as it directs human thought toward the realm of Spirit from a more awakened stance and seeks to renew humanity's relationship to the spiritual world from that stance. When the time comes for a new world prayer, it will reflect the evolving relationship between the human and spiritual kingdoms. But the time is not yet. (*May 2021*)

THE LIFE OF OUR ELDER BROTHERS AND SISTERS IN THE SPIRITUAL HIERARCHY

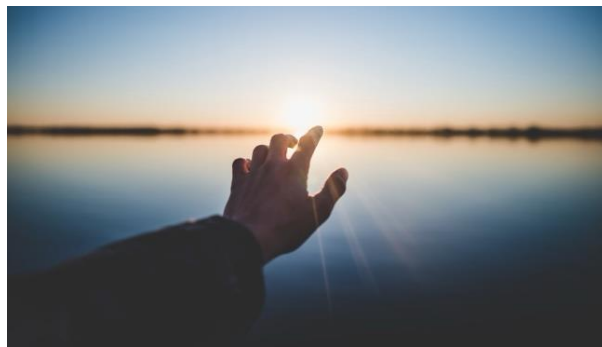


***Q: What is the content of the lives of our Elder Brothers?
How do They occupy Their time?***

R: In brief, our lives revolve around bringing the Plan of God into manifestation. In the decades leading up to the present stage of human awakening, the efforts of the ashrams of several Masters were focused intensely upon the expansion of higher intuition—*direct knowing*—within the ranks of advanced humanity. In this regard, you will note the stunning developments in science that opened the human mind to the previously unfathomable and unknowable essence of *life as Energy*. You will note the developments in leading-edge philosophy, psychology, and education related to acknowledging the higher nature of the human being. And you will note the massive increase in humanitarian responses to human and planetary need, growing out of an emerging realization of the interrelatedness and wholeness of human and planetary life.

We live and work for the breakthroughs in human consciousness that advance the plan of evolution. We thrive on those moments when a new idea that reflects and anchors the Plan is registered by a human being and brought into manifestation by a group. How do we accomplish this? By the transmission of thought, known to you as telepathy. (May 2021)

THE PURPOSE OF PAIN AND SUFFERING



Q: What is the reason for the creation of this world of pain and suffering?

R: The story of Earth is destined to be a story of redemption. The planetary Logos brought into manifestation a cacophony of life forms in order to ultimately transform them into a harmonious organism of a sacred nature.

What is the purpose of pain and suffering in the planetary scheme? Let us explore the answer in the terms of an individual's life. When you look back on your own life, how long did it take you to break destructive personality patterns that had kept you in a stranglehold of repeated negative consequences? What did it take to finally dissolve those patterns? It was assuredly an aspect of the pain and suffering of the human condition that became unbearable, causing you to stop in your tracks and ask yourself two questions: (1) Is life worth living if I must continue to endure this? (2) What have I done to deserve this?

The hope of redemption lies in posing the second question. The act of asking that question brings to light, however dimly at first, the existence of the Law of Cause and Effect. With the first faint awareness that a higher law underlies human existence, light begins to shine on the path out of suffering. By posing this question everything that had once seemed random and unjust, fuelling the consciousness of victimhood, is seen in a new light. A sense of responsibility arises and from that, life begins to

have meaning and the first question begins to answer itself. There will still be pain to endure as long as there is karma to be met, but the pain now has remedies—not superficial bandages to blot it out but remedies (via the Path) with the power to transform the life into an experience and expression of the Good, the True and the Beautiful.

The planetary Lord did not create a world of pain. Rather, He agreed to enter into a sphere of terrible darkness and chaos in order to redeem that world and raise it into a sphere of Light, to enable it to join the company of planets that are more evolved and are already sacralizing the life of our solar system. He has held this intention through eons of time. Now, through the shifting of cosmic and systemic forces, and through the spiritual progress of the vanguard of Earth’s humanity, it appears that this great planetary experiment may have a positive outcome, something that was never assured.

Right understanding of the use of pain and suffering—as an avenue of spiritual growth—is what transforms a human being into a spiritual being while incarnate on the dense physical plane of Earth. Let it be known, however, that in the new world that will unfold on the physical-etheric plane, joy will play this transformative role. When the love of the Soul catches fire, spreading from heart to heart and igniting the joy of the soul, we will see the birth of the New Humanity. For this new race of human beings, spiritual advancement will occur *not* through pain primarily, but through the fiery love of the soul that breeds the joy that ultimately turns into bliss.
(January 2021)

THE DESTRUCTION OF NOTRE DAME CATHEDRAL



Q: What is the significance of the world watching as flames destroy Notre Dame?

R: These flames have brought a prompting to a deeper spirituality for many Christians around the world. Lacking the structures and rituals that provided a safe haven for worshipping souls, Christians who are mourning this loss will be prodded into a greater awareness of spiritual realities. There will be a new sense of urgency for each person to discover the *inner* resources to fill the breach.

Amidst all the destruction, the image of the spire being ravaged by flames holds particular significance; the spire reaching up to the heavens symbolized the bridge between visible and invisible worlds. As the new era dawns, an inner bridge will be built by the soul extending its reach toward the Kingdom of Souls. The devastation of Our Lady's spire may spark an intuitive understanding of spiritual evolution.

With no central place of worship in the heart of Paris, and no place for the steady stream of visitors from around the world to congregate, there exists a new opportunity for turning within toward the Light of the Soul. Let the burning of the Cathedral of Our Lady signify the power of Spirit to destroy the shell of a crystallized form when the moment comes to liberate the imprisoned consciousness.

The release that occurs upon the death of the physical body is now occurring on a massive scale in the sight of humanity. Large areas of the planet have been dying in recent years from floods and fires, drought and pestilence. Much of humanity has closed its eyes to the catastrophic events mainly affecting poorer countries and regions. When catastrophe strikes the heart of the City of Light, the most beloved city on the planet, there is no place to turn except within. Those who are awakening can begin to examine deeper causes in the emerging light of the soul. *(April 2019)*

THE DIFFERENCE BETWEEN HEART AND SOUL



Q: *It seems easier to connect with my Soul than with my heart. What is the difference between the two and what is the relationship between them?*

R: These two words are frequently used interchangeably, however, for those on the Path there are important distinctions that are related to the unfoldment of spiritual awareness. The most important fact to bear in mind is that the heart is the gateway to the soul's awakening and the Path of Return to Spirit. Until the heart is open, one can learn *about* the path but there is little if any access to the light of the soul. The open heart lets in the light that begins to shine on the path of the serious aspirant.

Until the heart opens to the greater Life, there is no relationship between the part and the whole, the individual and the human race. Personal suffering occurs but there is no concern for the pain and suffering afflicting the rest of humanity and the other kingdoms of life. Around the time of the first initiation, as the heart opens, two things occur that set in motion the spiritual journey of the soul. First, the individual becomes aware of being part of a greater Life and looks for ways to improve conditions for lives beyond his or her own. Compassion grows and idealism takes root. But then the realization dawns that external change requires more than what is seen and known. Disillusioned with a world full of pain and devoid of love, the seeker eventually discovers the Path to a higher reality.

The suffering of other beings is registered in the heart and the awakening soul seeks to alleviate it. This seeking opens the way for the light of the soul to enter and eventually flood the awareness. As the dross of the personality is diminished on the path, the flow of light and love from Guides and Teachers within the spiritual Hierarchy intensifies. Thus, the path that begins in the heart of compassion unfolds as the light of the soul illumines the way toward the Hierarchy—the planetary reservoir of divine Love. This love is the healing balm that bestows upon those souls who receive it the grace to begin life anew, at a higher turn of the spiral of consciousness, and to serve in the creation of a world that will heal the heart of humanity. *(February 2021)*

THE ROLE OF ARCHANGLES



Q: Where do the Archangels fit into events unfolding now? What is the relationship between the Archangels and the work of the Ashram – Archangel Michael in particular?

R: This question concerns the existence of a kingdom about which humanity knows very little—the devic kingdom, which is the esoteric presentation of the angelic kingdom. Understanding this kingdom hinges on two realizations: (1) the reality of the Soul, and (2) the reality of the spiritual kingdom, which includes the Kingdom of Souls and the Devic Kingdom.

Until the present time, the work of the devic kingdom has been most visible to humanity in the springtime with the birth of new life in the plant and animal kingdoms. Devic lives also work with the mineral kingdom to bring about conditions necessary for the Plan to unfold. These can range from the spewing forth of lava from the center of the earth and the shaking of the crust of the earth (earth changes that signal shifts in aspects of planetary life) to forces that impact weather patterns and climate conditions.

The devas that influence the human kingdom are sometimes referred to as Mahadevas or Great Devas. They are also known in western religious traditions as archangels. Archangels or Great Devas are those who ‘supervise’ the work of the devic kingdom. That work entails actualizing the divine Plan in and through the four kingdoms of nature [mineral, plant, animal, and human]. In the human kingdom, this involves seeding the life conditions that bring the soul to the point of awakening and the sustaining of spiritual growth to the stage where the Soul imbues the form life and takes control of its outer vehicle.

Devas are responsible for the incidents and seeming co-incidences that direct a life along the lines planned by the Soul prior to incarnation. They are the agents responsible for the surge of synchronicities that have opened modern minds to the existence of an invisible realm that can interpenetrate and influence the densest realm of form life—an awareness that is serving the evolution of human consciousness.

It is rare that a Mahadeva has direct contact with a human being, apart from those exceptional individuals who have had a major role to play in the scheme of evolution. The contact may appear subjectively as an Archangel to attract the attention of the disciple with a religious mission, for example, in order to deliver a message from the spiritual Hierarchy. Archangels or Mahadevas are concerned with people and events that shape the world.

The Being that has been perceived by western humanity as the Archangel Michael is one of the Mahadevas most responsible for the outcome of conflicts and wars. He seeks to bring the Light of Truth to human beings in and through the darkest hours of strife and struggle. (*December 2020*)

THE FEMININE ASPECT



Q: Can you shed more light on the Mother of the World and the manifestation of the feminine aspect?

R: In simplest terms, the Father of the World is the Creator of the seed that blossomed into the life of our planet with its many kingdoms and species millions of years ago. The Mother is the Nurturer of the seed that multiplied into an infinity of seeds. She is the one who pours living nutrients into the soil that enable the seeds to germinate.

To place this metaphor in the context of the present time, we might say that the planetary Logos deemed the time had come to ‘reseed’ the Earth: to bring the outer manifestations of planetary life into alignment with the upward arc of evolution upon which the entire life of Earth has begun to ascend.

Required for this ascent is a transformational shift in consciousness and energies — from denser to subtler, from coarser to more refined, from harsher to kinder, from heartless to compassionate, from aggressive to cooperative, from separative to inclusive. The qualities toward which the human race is evolving are more natural to the female gender, having been honed through millions of years of maternal care.

One of the attributes of benevolent mothering is healing, of which humanity is in desperate need. It is the feminine aspect, also found in a minority of men, that will bring about the healing required for the rebalancing of Earth at a higher turn of the spiral of evolution.

Until the present time, Initiates of the Spiritual Hierarchy have taken on male bodies to withstand the rigors of a world dominated by coarseness, hatred, violence, and aggression. Now, as the energetic shift continues and the tide turns, the female form is also becoming a custodian of higher energies. For the first time in humanity’s

evolution, the feminine aspect is incarnating in an energetic environment that is conducive to its full flowering.

When the Christ first appears as the World Teacher, He will be clothed in a masculine form as is the human expectation at this time. But as the new era unfolds on a plane of greater refinement, the outer form will become less important than the consciousness radiating from that form. Consciousness has no gender. A pure soul is a pure soul irrespective of its outer form.

In the coming era, the evolved female form will be a vehicle through which the Mother of the World will take root in the heart of humanity, as She nurtures the awakening seed of divinity into its full expression. She will thus serve to bring the New Earth into manifestation. *(September 2020)*

THE APPEARANCE OF THE MASTERS

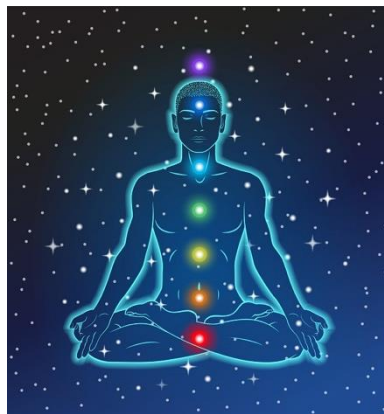


Q: Will the Masters incarnate biologically as infants, or will they manifest themselves in adult bodies, or both?

R: To serve the present moment in human and planetary evolution, there is a need for the Masters who emerge from the inner planes, to create the appearance of having a dense physical form. This can be most readily accomplished through adult bodies of *apparent* substance known as *mayavirupas*. The reason for this is two-fold: First, the urgency of the times. You will note how rapidly things in the outer physical world are breaking down. To take advantage of the window of opportunity remaining, it will be necessary to adopt forms that can be seen through physical eyes. Not until the shift occurs will people be able to perceive subtler etheric forms.

The second reason is that They will not long remain in these forms. These vehicles will mainly be utilized for the transition period preceding the shift. They will serve to announce a new dispensation of spiritual Light for the awakening segment of humanity. Later, as the veil thins, there will be no need for vehicles of a dense outer appearance. (November 2020)

RACE AND RACIAL DOMINANCE



Q: How can the dominant race learn to accept that it is not superior because it is dominant? One racial group has had a false sense of supremacy during thousands of years of human civilization based on its external appearance.

How can this glamour of superiority be eliminated?

R: Dramatic changes in awareness will come about during the new era through the replacement of the dense physical body—the ‘outer vestment’ of the incarnating soul for eons of evolution—with a body of etheric substance. The light of the soul will radiate through the energy centers, the chakras, of this subtler vehicle. In place of current human hierarchies based on money and power, there will come to exist a hierarchy based on spiritual illumination that will be visible to all.

The existence of this hierarchy will shatter beliefs and thoughtforms about the value of human beings based on outer physical appearances. The brightest light will emanate from the World Teacher and members of the spiritual Hierarchy who will partake of His earthly mission. The next brightest lights will be those of disciples and initiates among humanity who are serving the divine plan in cooperation with the Hierarchy.

The principles and processes of spiritual evolution will be unveiled in the coming era. It will be realized that advancement into the spiritual realm occurs by means of

accumulating the light of wisdom on the Path of Return to Spirit. All awakening souls who are prepared to submit to the requirements of self-transformation will be encouraged to tread this Path.

There will no longer be races based on skin color or genders based on body type. The physical traits that have defined superiority and inferiority from the time of the origins of two genders will be greatly diminished. The subjugation of one group of humans by another based on race, from the time when Europeans exploited the resources of Africa and enslaved its peoples, will be no more. An entirely new set of values and standards will replace the old. Individuals will be known by the light they radiate. It will be recognized by all that there exists a hierarchy of love and wisdom, and that advancement into its ranks depends upon the evolution of consciousness. *(November 2020)*

THE NEED FOR CALM



Q: How can we best serve in these times?

R: In chaotic times such as the present, there is a critical need for calm—not an artificial calm, manufactured for appearances by suppressing anxiety and distress, but the calm that belongs to the soul. Genuine calmness flows from the higher Self who knows its purpose for being incarnate at this crucial moment in evolution and is working to fulfill that purpose. Souls such as these are like sentinels arising from the watery depths to guide humanity toward its destination in the New Earth.

We urge you to stand tall, dear brothers and sisters—stand tall and wave the banners of *Light Incorruptible* and *Love Transcendent and Divine*. By this means, will you herald Our footsteps and pave the way for Our descent. Do not expend another gram of energy questioning Our forthcoming presence. The time for such

questioning is over. The Plan is unfolding. We are on Our way, closer than you may realize to entering the denser plane of human living, if only for a while. (October 2017)

THE FREQUENCY SHIFT



Q: How do vibrational frequencies relate to cycles of planetary evolution?

R: The Logos of Earth, the God of our planet, is undergoing a higher initiation and in the process, He is raising the consciousness of all sentient forms enfolded in the vastness of His Life. The key to understanding all that is now occurring lies in the realm of vibratory frequencies. Everything in the universe is primed to function at a particular frequency. You know this is true of musical instruments, plus instruments of light, electronics, and electricity. Moreover, science has proven that the planet itself vibrates at a particular frequency, one that has been rising in recent times.

Likewise, the energy bodies of humans and other beings emit their own vibrations. Much of humanity functions at a common frequency, but there are exceptions at both the lower and higher ends of the spectrum. Individuals who are more conscious emit vibrations of a higher frequency. This is what explains the capacity to contact Teachers and Guides on the inner planes. Electric currents of thought emanating from the subtler planes of the higher worlds find outlets within those on the outer planes of Earth who vibrate at a subtler frequency.

Earth is an electro-magnetic sphere in which lives of similar frequencies on the horizontal plane naturally attract one another. But how do human beings attract Beings of higher frequencies? By raising their own vibrations through the many spiritual practices of which you are aware. What is poorly understood, however, is that extending human consciousness into subtler planes brings about changes in the

etheric-physical body. The entire mechanism becomes more refined, resulting in greater sensitivity to the realms of spirit.

Imagine a piano-tuner whose tuning fork not only attunes the piano keys to pure musical notes but who can also raise the frequencies of the keys. This is occurring on Earth right now, metaphorically, but most human beings cannot yet hear the Great Piano-Tuner. Some of the keys are damaged beyond repair and others are out of tune. Only those can hear who have raised their frequency through the elevation of consciousness and consequent life changes. Those who cannot hear will remain out of tune when the shift occurs. They will be left to thrash about in the world of their making as the life-wave of the planet rises to a dimension of subtler frequencies for the start of a new cycle in Earth's evolution. (September 2020)

OTHER KINGDOMS OF NATURE



Q: What is the role of the animal and plant kingdoms during this Great Transition to a new era?

R: Members of the animal kingdom have been instrumental in opening the human heart, which is the 'birthplace' of the Soul. The open heart is essential to the evolution of consciousness on the brink of the Aquarian Age. Were it not for the unconditional love abundantly supplied by members of the animal kingdom, the human race would be substantially more limited in its capacity to feel and express love—the fundamental requirement for the Great Turning of the Ages.

Domestic animals deserve credit for the healing of untold millions of human lives and the opening of hearts to the presence of Divinity. Anyone who has had an animal pet can testify to the unbroken stream of love that flows from them. This continuous

stream carries an exquisitely intimate healing energy which, when reflected upon, opens the mind to thoughts about the Creator of Life as a source of love. Such thoughts have been contributing factors to the current spiritual awakening and the growing readiness of humanity to take its rightful place in the Age of the Soul. The infinite beauty and abundance of the plant kingdom have, from time immemorial, played the role of deepening human awareness of the Creator.

In the coming age, when the 4th kingdom (of humanity) begins to blend and merge with the 5th kingdom (of Souls), the lesser kingdoms of animals and plants will be the beneficiaries. For the present, humanity is in their debt. *(October 2020)*

THE NEED FOR PHYSICAL BODIES



*Q: Will we remain in dense physical bodies after the reappearance of the Christ?
Will we need to remain anchored in both worlds to serve as a bridge
between the 4th (human) and 5th (spiritual) kingdoms?*

R: The Christ will appear briefly at first, on the dense physical plane, to all who have eyes to see. He will then reappear as the World Teacher to initiate the education that will undergird the birth of the new world civilization.

As the planetary lifestream rises to the physical-etheric plane, there will be no need for denser bodies. The bridge in consciousness you are building in cooperation with Us will continue to exist and, without the hindrances of the denser plane, this bridge will become an open channel for the flow of higher knowledge and wisdom into the minds of awakening humanity.

The lifewave of Earth is entering a subtler plane for the next cycle of evolution. It descended into the depths of matter over eons of time for evolutionary purposes and

has now entered upon the upward arc of evolution on the return to Spirit. This entails releasing the density of the physical plane and acclimating to life on a plane of greater refinement. The law holds that consciousness precedes and conditions form. The awakening consciousness of the new humanity that is advancing with the planetary lifewave will require subtler and lighter forms for working out the Plan leading to the sacralization of our Earth. *(November 2020)*

THE GREAT SHIFT



Q: There is much glamour and confusion surrounding the greatly anticipated Shift. Can you help us understand the timing, who will experience it, and what we should watch for as signs?

R: The planetary shift has already begun on the plane of consciousness. It began in the last century with the writings of Helena Blavatsky, Alice Bailey, and Helena Roerich, who brought esoteric knowledge and understanding into the world. This was knowledge intended to prepare human minds for the adjustment to the subtler realities involved in the Shift of the Ages. These seminal texts gave rise to innumerable writings and teachings from individuals (of lesser degrees of illumination) around the world and in the climate of that time came the influx of swamis from the East into the Western world. Teachers of many stripes, including groups like the Beatles who promoted Eastern ideas, were part of the shift in mass consciousness as was the swarm of 'new-age gurus.'

To assign a timetable to this Great Event is to see it as a singular occurrence, whereas it is a process launched centuries ago by the spiritual Hierarchy in view of this crucial turning-point in Earth's evolution. It is not an event that can be localized in time, but an ongoing movement aimed at the withdrawal of human consciousness from identification with dense form and toward identification with Soul and Spirit. The

influx of cosmic and hierarchical energies underlying this shift from the Piscean to the Aquarian Age, intensifying during the past century, has elicited a growing responsiveness in human awareness.

Nevertheless, seismic events will inevitably occur—both on the physical plane and in the realm of consciousness. The main sign to look for is the realization within humanity that the problems it faces are greater than humanity itself is capable of solving, i.e., that Higher Forces are needed to lift humanity out of its catastrophic circumstances. A realization emerging is that human capacities are not equal to the task of saving the Earth and its peoples from human-induced calamities. A humbling process is taking place within advanced humanity, which has been accustomed to relying on science for solutions to all things. Look for signs of recognition that concrete mind has met its limits.

Awakening souls are experiencing the shift in consciousness that will produce a new world in the coming era. This is especially true among those on the spiritual Path who have transformed their identity from that of the personality [the physical, emotional, and mental aspects of the self] to that of the higher Self, the Soul. The soul on the Path begins to experience a connectedness with the Kingdom of Souls that will turn the shift in consciousness into the foundations of a new world. *(November 2020)*

THE UNITED NATIONS



Q: What part will the United Nations play in the coming years? Will it achieve the esoteric and spiritual goal it was created for eight decades ago?

R: In the wider scheme of human evolution, the United Nations can best be understood as an experimental incarnation of a spiritual ideal. It achieved something never before attempted by the human race: the gathering under one roof of representatives of every nation in the world. That was a giant step for humanity,

although it remains far from manifesting the ideal of human unity—the spirit of brotherhood—that underlaid its founding. The United Nations is a symbol of the one humanity in outer form only, as the ideal outstripped the prevailing level of consciousness attained by the human race until now.

The major deliberative bodies of the United Nations turned into showplaces for divergent points of view, preventing the system as a whole from serving as a rallying point for the peoples of the world to stand behind actions serving the peace and well-being of the human race. Such universal consensus awaits the downpour of illumination that will raise the consciousness of humanity for creating a new world in the coming age.

The promise of this spiritual experiment to bind humanity together and eliminate the scourge of war has not been fulfilled, yet significant good has been done across the globe through its arms of service and education. And at present, a higher stage of consciousness is emerging within individual and group cells in the body of humanity, with new organs forming to fulfill the evolutionary purpose. The growing edge of human consciousness has leapt over the walls of the UN just as an individual's consciousness breaks out of its crystallized form. New cells in the body of humanity are arranging themselves into conscious vehicles that will shape the human future in cooperation with the spiritual Hierarchy. *(November 2020)*

THE NATURE OF THE REAPPEARANCE OF CHRIST



Q: Will the Christ appear in a physical body so that humanity will be able to see Him, or will He remain in an etheric form in which only those who have inner vision will see?

R: We might rephrase the question this way: Who will see what and when? We have said that the Christ will appear briefly before humanity to ‘announce’ the end of the present cycle of evolution and the start of the new one. However, the strain of this appearance will be great for a Being who has long dwelled in a realm of subtle energies, and He will not remain for long. It is when the shift occurs and the lifestream of Earth enters the etheric plane that the Christ will be present to ‘inaugurate’ the new era and launch His mission as World Teacher. When He reappears as Teacher and Initiator of a new world civilization, He will dwell in an etheric form visible to souls on that plane who will be ‘clothed’ in etheric-physical bodies and will have etheric vision. Before then, when He appears to the world in its current density, His outer form will be visible to those who dare to look His way as it will be akin to looking directly into the sun. (*October 2020*)

THE RELATIONSHIP BETWEEN SOUL AND SPIRIT



Q: *How is soul awareness related to the Spirit that illumines all things? How will they work together in creating a world based on justice and love?*

R: Spirit permeates all life forms including those that appear most inanimate, such as huge and seemingly immovable boulders. However, even as Spirit ascends the evolutionary ladder of form and gives life to increasingly more complex forms in the visible kingdoms of nature, its existence is not registered. Most humans are not any more aware of the spark of divinity that gave them life than are the animals.

With the awakening of humanity to the indwelling soul—and to the spiritual realm of life—the planet Earth is becoming aware of itself *for the first time in its evolution*. The future of the living planet depends upon this mounting awareness. When the soul awakens and higher realities are impressed upon the individual’s awareness, actions

are taken to serve the common good. What will turn the tide of evolution is the accumulation of selfless acts dedicated to the welfare of humanity and the other kingdoms of Earth's life.

Because the soul awakens in concert with the heart, the opening of the heart is key to all that hangs in the balance for humanity at this momentous time. We refer to the heart chakra, the center within the etheric vehicle that registers subtle impressions from the outer world as well as the inner planes of life. In the evolution of consciousness, the heart chakra is a primary instrument of sensitivity as it vibrates in resonance with the life force in all creatures. As sensitivity to other lives grows and the vibrational frequency of the heart increases, the soul becomes more responsive to the divine essence of Life — in a flower or a fawn or an infant. This sensitivity stirs awareness of the Creator of Life and the source of Divine Love that indwells all forms. The conscious soul is the doorway for divine love to enter the world of human affairs through its awareness and its actions. *(October 2020)*

