

THE GREATER CONTEXT  
FOR THE EXTERNALIZATION  
OF THE HIERARCHY



There are times in the evolution of a planet when the entirety of the life undergoes a massive transformation in order to arrive at a higher octave of itself at a higher turn of the evolutionary spiral, not unlike what happens to an evolving individual.

Such terminology is only comprehensible in the present time because of the fact that human beings are awakening to the light within themselves and gaining the capacity to conceive of the fact that another Self exists within their outer form.



So does the planet called Earth contain within its outer form a higher octave of itself created of subtler substance. This fact must be grasped to understand what is occurring right now on the inner planes. The transformation of a human being into a soul-infused personality is roughly understood by all who consciously tread the Path of Ascent.



A higher aspect of consciousness is invoked into awareness by a lesser aspect that is reaching out for greater love and light of understanding. Once evoked it 'descends' into the individual's perceptual aura, superimposing its radiance upon the life of the lesser aspect.



So it is that the Hierarchy of Love and Light, the planetary counterpart to the Soul of the human being, is invoked into manifestation by humanity's response to evolutionary forces.

This is not an exact parallel but we present it for your consideration to make the point that the awakening of humanity is part of the great planetary awakening to life at a higher turn of the spiral of evolution, which also involves participation in a greater life extending well beyond the limits of this single planet and beyond the Sun's system.



As the light of the Soul grows in luminosity to the point where it blends into the Kingdom of Souls, so will the light of the Kingdom of Souls fuse and blend with the light of Shamballa, which itself will receive an injection of cosmic light that will stream into the earth and the entire Solar System as part of a systemic expansion of consciousness.

THIS IS WHAT LIES AHEAD  
IN THE COMING GREAT YEAR,  
THE NEXT CYCLE OF  
26,000 YEARS.

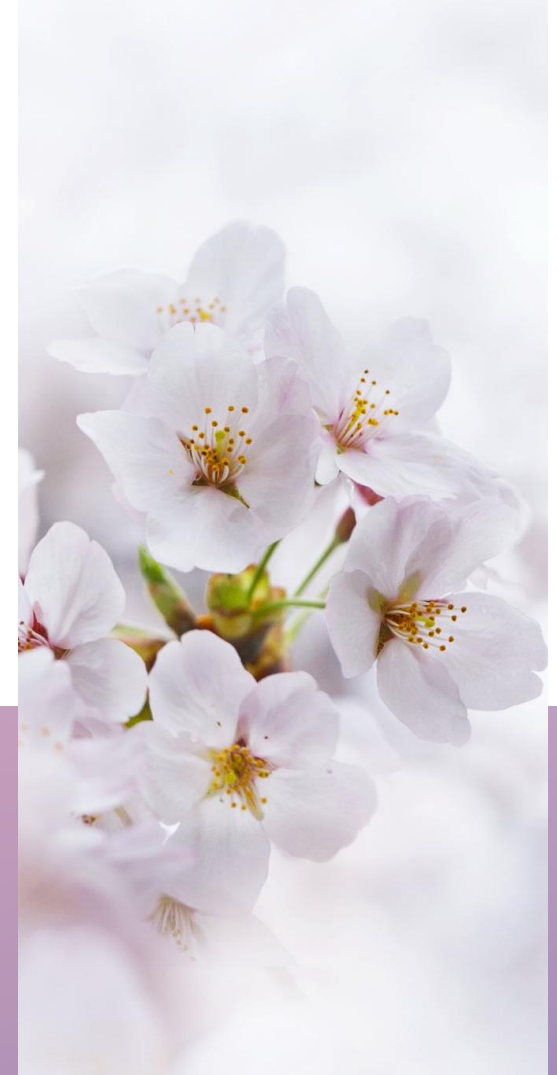


The externalization or revelation of the Planetary Hierarchy must be seen in this light to be rightly understood. It is the planetary counterpart to the 'externalizing' human soul that is increasingly making itself seen and known in the world of form in this Time of the Forerunner.



The return of Masters and Senior Disciples to the outer planes is an event of such magnitude in the planetary Life that it will inaugurate an age whose grandeur can only be perceived as part of the divine scheme of evolution.

To externalize is to be called forth from the inner planes into the outer world of human living by the invocative pleas of a humanity on the brink of despair and by evolutionary processes cosmic in origin.





Nothing occurs in isolation, as scientists have shown on the level of subatomic wavelets of energy, and as their telescopes have shown while roaming star systems and galaxies far out in the cosmos.

On the cosmic scale of life to which we now refer, multiple forces are choreographing another expansion of the universe in which consciousness will overtake the primacy of form in the denser spheres of galactic Life.



At the higher planes of this unitary Life, a Force emanating from beyond the manifest worlds will increasingly make known its Purpose for the design of this expanding Universe.



*[Click here for the next section](#)*